

PINE CREEK



Angus Ranch



Coming 2 Year Old Bull & Bred Heifer Sale

FRIDAY, DECEMBER 16, 2022

1:00 PM MST

FAITH LIVESTOCK AUCTION • FAITH, SD

Welcome to Pine Creek Angus Ranch's second annual coming two-year-old bull and bred heifer sale. The sale will be held at Faith Livestock Auction – Faith SD. FRIDAY, December 16, 2022. The bulls will sell at 1:00 PM (MT) with the females to follow.

The bulls were summered on pasture with a mineral tub and fly control. They are now in a 120-acre pasture where they get plenty of exercise and are being fed a high roughage ration.

The bulls will be fertility tested and scrotal measured by Scoggin Vet Services. This information will be available sale day on our supplement sheet along with their December weight.

Again, this year we did not sell any heifers at our spring sale, but kept and bred them. We believe this set of heifers is one of the best heifer groups we have ever offered for sale. The heifers were ultra sound tested, September 12, by Dr. Scoggin, and will be rechecked before the sale by Scoggin Vet Service. The heifers were given Cattlemaster Gold FP5 L5, and had their first dose of Guardian scour vaccine in November.

The bulls and heifers are on a chelated mineral and nutrition program monitored by Jack Sieben of J&R Feeds. Bulls and Heifers have been poured twice this fall, and had 2 doses of Foot Rot vaccine last spring. We recommend the bulls be given a booster before turn-out in 2023.

You are always welcome to stop by the ranch for a visit, and to see where and how the cattle are raised. The ranch is located 27 miles west of Faith, or 48 miles east of Newell, and 8 miles south of Maurine.

We will take the bulls and heifers into Faith on Wednesday, December 14.

Our family would like to invite you to come early on sale day to see the bulls and bred heifers and have lunch with us before the sale.

Friday, December 16, 2022 at 1:00 PM (MT) • Faith Livestock Auction • Faith, SD

Thankful for our many blessings!



Lyle & Miriam

The Weiss Family

YS



Justin, Lacey, Paige, & Grace

17013 Maurine Rd. Faith SD ~ PineCreekAngusRanch.com ~ pcar@gwtc.net
Lyle ~ Home: 605-748-2217 or Cell: 605-515-0118
Justin ~ Home: 605-748-2408 or Cell: 605-290-3059

Friday, December 16, 2022 • 1:00 PM

Faith Livestock Auction, Faith SD
Complimentary lunch served prior to sale



Selling 38 Registered Coming 2 Year Old Angus Bulls & 67 Bred Heifers

Lyle Weiss..... 605-748-2217 or 605-515-0118
Justin Weiss..... 605-748-2408 or 605-290-3059
Sale Day Phone..... 605-967-2200

Auctioneer

Seth Weishaar..... 605-210-1124

Sales Consultants

Dan Piroutek..... 605-685-4556
Vern Frey: Frey Livestock Sales & Service..... 701-721-0344

Sale Day Representatives

Faith Livestock Auction..... 605-967-2200
 Owner: Dace Harper..... 605-515-1535
 Owner: Mason Dietterle..... 605-580-5878
Scott Dirk: Tri-State Livestock News..... 605-380-6024
Ryan Casteel: Cattle Business Weekly..... 605-423-6000
Beau Ravellette: Ravellette Publications..... 605-685-8155

Herd Health is monitored by:

Dr. Tammy Winger: Faith Veterinary Services..... 605-967-2212
Dr. Rett Scoggin: Scoggin Veterinary Services..... 605-892-4242

Herd Health

Birth..... Alpha C&D • Inforce 3 • Min-Max
Branding..... Bovi-Shield Gold 5 • Vista Once SQ • Once PMH-IN
Pre-Weaning... Nasalgen • Vista Once SQ • Ultra bac 7/Somubac
Weaning..... Pulmoguard PHM-1 • Inforce 3
In November bulls were poured with Clean-Up II w/ IGR. Bulls have had 2 doses of foot rot vaccine. All cattle sell with appropriate health papers for interstate shipment.

Bulls will be semen tested and their scrotal measurements will be available sale day.

Herd Nutrition

Jack Sieben: J&R Feeds..... 605-660-9975
Marlin Brink: M/L Feeds..... 605-985-5285

Online Bidding

If you would like to view and bid online, please register prior to the sale at www.CattleUSA.com

Videos

Videos will be available in the beginning of December on our website, PineCreekAngusRanch.com

Announcements

Announcements made sale day will take precedence over any printed information.

Retained Interest

Pine Creek Angus Ranch is retaining one third (1/3) revenue sharing semen interest in every bull selling in the sale.

Delivery

FREE DELIVERY, up to 350 miles. We will keep the bulls, free of charge, until we deliver them or deduct \$100 per head from the purchase price if you take them home from the sale barn.

First Breeding Season Guarantee

Bulls selling for \$3,500 or more are guaranteed against breeding injury for the first breeding season. Breeding season is defined as the 60-day period following the first turn out of the bull. This is not mortality insurance. If a replacement bull is available, he will be provided or if the buyer prefers, credit towards one bull will be given for the following year's sale, less salvage value of the injured bull. All injured bulls must be diagnosed by a licensed veterinarian. We need to be notified should injury occur, and before the bull is sold for salvage. A copy of the salvage receipt must be sent to us. All claims must be made by Sept 1, 2023.

Pine Creek Angus Ranch will not be responsible for more than the purchase price of the bull.

Mortality Insurance will still be available for those who wish to purchase it.

Insurance

Katie Williams of Martin Trudeau Insurance will be at the sale offering Livestock Mortality Insurance.

Martin Trudeau Office 605-996-3106
Katie Williams 605-770-9986



Reference Sires



Sitz Resilient 10208

Sitz Resilient 10208



DOB: 02/15/2018 Freeze Brand: 1020 Reg # 19057457
 Mohnen Substantial 272 Benfield Substance 8506
 Mohnen Glyn Mawr Elba 1758
Sitz Stellar 726D Connealy Final Product
 SITZ Pride 200B Sitz Pride 308Y
 GDAR Game Day 449
 Sitz Top Game 561X Sitz Pride 88T
Sitz Miss Burgess 1856 Sitz Rainmaker 10899
 Sitz Miss Burgess 4381 Sitz Miss Burgess 1609

CED	BW	WW	YW	CEM	Milk
8	.3	81	143	7	24

Sitz Resilient 10208 by Sitz Stellar 726D, was the record - setting \$165,000 bull of the 2019 Sitz Fall Sale. Resilient offers a maternal pedigree to build a cowherd around, backed by generations of calving ease, fertility, foot quality, and maternal function. With a PAP Score of 37 Resilient as a sire contributes to an elite PAP score EPD and makes him a great choice for producing cattle that will work at altitude.

LD Capitalist 316

DOB: 01/26/2013 Freeze Brand: 316 Reg # 17666102

S A V Final Answer 0035 Sitz Traveler 8180
Connealy Capitalist 028 S A V Emulous 8145
 Prides Pita of Conanga 8821 C R A Bextor 872 5205 608
 Prides Trav of Conanga 6499
 G A R Precision 1680
 C A Future Direction 5321 C A Miss Power Fix 308
LD Dixie Erica 2053 LD Royce Onaroll 810
 LD Dixie Erica Oar 0853 Dixie Erica of R R 8553

CED	BW	WW	YW	CEM	Milk
12	-.6	66	113	11	26



LD Capitalist 316

His progeny prove why Capitalist 316 is in high demand. Standing on a perfect foot, his structure and soundness are flawless. 316 stamps his calves with a look of style and quality with added muscle and performance – progeny are wide based and dense. Elite calving ease sire with exceptional growth and looks. The final proof – 316 daughters have beautiful udders, are super easy fleshing, and productive.

Mr JT Bronc 818

DOB: 02/08/2018 Freeze Brand: 818 Reg # 19089334

EF Commando 1366 EF Complement 8088
Baldrige Bronc Riverbend Young Lucy W1470
 Baldrige Isabel Y69 Styles Upgrade J59
 Baldrige Isabel T935
 Leachman Right Time 388-5605
 WMR Timeless 458 WMR Blackcap 521
Miss JT Lady of Time 203 ER Falcon K177
 Miss JT Becky 506 Miss J T Lady of Design 241

CED	BW	WW	YW	CEM	Milk
12	-1.0	59	111	12	28

Mr JT Enhance 909



DOB: 02/09/2019 Freeze Brand: 909 Reg # 19441336

SydGen Exceed 3223 SydGen Googol
SydGen Enhance SydGen Forever Lady 1255
 SydGen Rita 2618 SydGen Liberty GA 8627
 Fox Run Rita 9308
 Sitz Alliance 7544
 KG Alliance 1193 KG Rito Lady 9152
Miss JT Alli 740 Connealy Confidence 0100
 Miss JT Proud Lady 462 Miss JT Dakota Lady 133

CED	BW	WW	YW	CEM	Milk
6	-.2	77	151	11	42



Pine Creek Alliance 7255

Pine Creek Alliance 7255



DOB: 03/31/2017 Freeze Brand: 7255 Reg # 18936014

Sitz Alliance 7544 Sitz Alliance 6595
 Sitz Pride 2561
KG Alliance 1193 Connealy Contrast
 KG Rito Lady 9152 KG Rito Lady 7239
 SydGen C C & 7
 Hoover Dam Erica of Ellston C124
PCAR Pride 3046 Pine Creek Image Maker 7131
 PCAR Pride 0085 PCAR Pride 4005

CED	BW	WW	YW	CEM	Milk
6	.6	58	117	6	30

7255 combines some of the very best traits in the breed and earned the right to carry the Targeting the Brand Logo for Certified Angus Beef. 7255's dam has a weaning ratio of 107 on 6 head, and a yearling ratio of 108 on 6 head. 7255 is owned with Joseph Angus and VinMar Angus.

Reference Sires

K C F Bennett Constitution

DOB: 09/12/2017 Freeze Brand: E404 Reg # 19151324
 Vermilion Payweight J847
 Basin Payweight 006S
 Basin Lucy 3829
Basin Payweight 1682
 21AR O Lass 7017
 HARB Pendleton 765 J H
 21AR O Lass F24A
 K C F Bennett Energizer
 K C F Bennett Homestead
K C F Miss Homestead C452
 K C F Miss Contrast Z607
 K C F Miss Quality P164
 Connealy Contrast
 Thomas Patricia 9705

CED	BW	WW	YW	CEM	Milk
12	-1.1	74	133	12	34

Pine Creek Epic 9128

DOB: 03/10/2019 Freeze Brand: 9128 Reg # 19654836
 Connealy Final Product
 Varilek Product 2010 04
 Varilek Pearl 0006 014
3F Epic 4631
 Zebo Queen 1072
 EF Complement 8088
 EXG Blackcap 6247 PPC
 Connealy Final Product
 Sitz Final Product 765a
 Sitz Pride 88T
PCAR Erica 6082
 PCAR Erica 0201
 Sitz Upward 307R
 PCAR Erica 0174

CED	BW	WW	YW	CEM	Milk
7	.7	78	147	14	30



Sitz Accomplishment 720F

Sitz Accomplishment 720F



DOB: 01/24/2018 Freeze Brand: 720F Reg # 19078208
 Poss Easy Impact 0119
 Poss Lasting Impact 3118
Poss Achievement
 Poss Erica 327
 Poss Blackbird 005
 KM Broken Bow 002
 Poss Erica 1203
 Rito 707 of Ideal 3407 7075
 S A V Resource 1441
 S A V Blackcap May 4136
Sitz Barbaramere Nell 166D
 Sitz Barbaramere Nell 14Y
 Connealy Right Answer 746
 Sitz Barbaramere Nell 143W

CED	BW	WW	YW	CEM	Milk
10	.6	75	135	16	21

A true breeding accomplishment! 720F combines the eye appealing calving ease and carcass merit of Poss Achievement with the powerful muscle mass of SAV Resource 1441. Sound structured and good footed with a PAP EPD of -1.80, which places him in the top 2% of the breed.

Pine Creek Bullseye 7260

DOB: 03/31/2017 Freeze Brand: 7260 Reg # 18936018
 MOGCK Sure Shot
 Mogck Bullseye
Sitz Bullseye 9994
 Sitz Pride 0128
 Mogck Mary 1255
 Sitz Upward 307R
 Sitz Pride 2561
 Mytty In Focus
 Pine Creek IN Focus 7022
 PCAR Emma E 0032
 PCAR Emme E 5122
 PCAR Everelda Entense 5051
 Pine Creek Dateline 3132
 P C A R Emma E 722

CED	BW	WW	YW	CEM	Milk
13	-1.4	61	111	16	35

Pine Creek Chisum 7008

DOB: 02/15/2017 Freeze Brand: 7008 Reg # 18813504
 S Alliance 3313
 S Gloria 464
S Chisum 255
 S Blossom 0278
 Shipwheel Chinook
 S Blossom 8378
 Connealy Final Product
 Sitz Investment 660Z
 Sitz Ellunas Elite 656T
PCAR Henrietta Pride 5040
 PCAR Henrietta Pride 0129
 Pine Creek IN Focus 7022
 PCAR Henrietta Pride 2216

CED	BW	WW	YW	CEM	Milk
7	-.6	65	104	9	11

Sitz Bullseye 9994

DOB: 02/24/2014 Freeze Brand: 9994 Reg # 17807052
 Mytty In Focus
 MOGCK Sure Shot
Mogck Bullseye
 Mogck Mary 1255
 Connealy Onward
 Sitz Upward 307R
 Sitz Henrietta Pride 81M
Sitz Pride 0128
 Sitz Pride 2561
 D H D Traveler 6807
 Sitz Pride 2188

CED	BW	WW	YW	CEM	Milk
2	2.6	83	140	11	29

OCC Active Duty 522

DOB: 02/19/2015 Freeze Brand: 522 Reg # 18261438
 Bon View Design 1407
 LCC New Standard
 LCC Sunset K3188
R B Active Duty 010
 B A Lady 6807 305
 Vermillion Dateline 7078
 G D Lady Hi Flyer 302
 Kahn Broadband R A 94L
 Shadybrook Ever Entense 491G
OCC Lucy 620
 Inniway Ms VRD 232
 Wards Lucy 414

CED	BW	WW	YW	CEM	Milk
10	1.4	64	110	8	27

Don't buy an **imposter.**

Not all "Angus" bulls are **REGISTERED** Angus bulls.



If you see this logo in conjunction with an individual animal or group of animals, you know that that animal is registered with the American Angus Association and backed by the power of **data, programs** and **pedigrees** of the Association.

Invest wisely in those that carry the **Powered By Angus** logo.



Look for the **REGISTRATION NUMBER.**

For more information on the Powered By Angus program, visit:

Angus.org/PBA.

1 Pine Creek Resilient 1177J



DOB: 03/16/2021 Freeze Brand: 1177J Reg # 20275362

Sitz Stellar 726D
Sitz Resilient 10208
 Sitz Miss Burgess 1856

Mohnen Substantial 272
 SITZ Pride 200B
 Sitz Top Game 561X
 Sitz Miss Burgess 4381

SydGen C C & 7
PCAR Lady Bell 0354
 PCAR Lady Bell 7030

S A F Connection
 SydGen Forever Lady 4087
 Mytty In Focus
 P C A R Lady Bell 5182

CED	BW	WW	YW	HP	Milk	Marb	RE	\$M	\$B	\$C
9	1	69	121	17.9	32	.80	.80	87	149	280
BW		205 Wt			365 Wt					
83		556			1119					



Lot 3

4 Pine Creek Resilient 1197



DOB: 03/16/2021 Freeze Brand: 1197 Reg # 20275353

Sitz Stellar 726D
Sitz Resilient 10208
 Sitz Miss Burgess 1856

Mohnen Substantial 272
 SITZ Pride 200B
 Sitz Top Game 561X
 Sitz Miss Burgess 4381

Hoover Dam
PCAR Emma E 2139
 PCAR Emma E 7037

SydGen C C & 7
 Erica of Ellston C124
 Genetics by Design 049
 Pcar Emma E 329

CED	BW	WW	YW	HP	Milk	Marb	RE	\$M	\$B	\$C
6	.1	65	110	17.9	30	.74	.49	92	135	267
BW		205 Wt			365 Wt					
79		564			1050					



Lot 5

2 Pine Creek Resilient 1183



DOB: 03/16/2021 Freeze Brand: 1183 Reg # 20275339

Sitz Stellar 726D
Sitz Resilient 10208
 Sitz Miss Burgess 1856

Mohnen Substantial 272
 SITZ Pride 200B
 Sitz Top Game 561X
 Sitz Miss Burgess 4381

Pine Creek IN Focus 7022
PCAR Blackcap 5090
 PCAR Blackcap 5075

Mytty In Focus
 PCAR Everelda Entense 5051
 Sitz Greatplains 8102
 PCAR Blackcap 334

CED	BW	WW	YW	HP	Milk	Marb	RE	\$M	\$B	\$C
12	.2	77	134	15	28	.81	.61	91	140	273
BW		205 Wt			365 Wt					
85		559			1103					

3 Pine Creek Resilient 1187

DOB: 03/16/2021 Freeze Brand: 1187 Reg # 20275345

Sitz Stellar 726D
Sitz Resilient 10208
 Sitz Miss Burgess 1856

Mohnen Substantial 272
 SITZ Pride 200B
 Sitz Top Game 561X
 Sitz Miss Burgess 4381

Hoover Dam
PCAR Heather Bloom 3197
 PCAR Heather Bloom 5162

SydGen C C & 7
 Erica of Ellston C124
 Sitz Greatplains 8102
 P C A R Heather Bloom 0163

CED	BW	WW	YW	HP	Milk	Marb	RE	\$M	\$B	\$C
9	.8	59	101	14.9	30	.68	.70	91	137	269
BW		205 Wt			365 Wt					
83		623			1100					

ABOVE AVERAGE GOALS REQUIRE TARGETED BULLS

The Targeting the Brand™ logo highlights registered Angus bulls with greater genetic potential to produce calves that meet the most challenging specifications of the Certified Angus Beef® brand.

Minimum Genetic Requirements

Marbling EPD (Marb)	+0.65
Dollar Grid Carcass Index (\$G)	+55.0

5 Pine Creek Resilient 1221

DOB: 03/18/2021 Freeze Brand: 1221 Reg # 20275290

Sitz Stellar 726D
Sitz Resilient 10208
 Sitz Miss Burgess 1856

Mohnen Substantial 272
 SITZ Pride 200B
 Sitz Top Game 561X
 Sitz Miss Burgess 4381

OCC Active Duty 522
PCAR Blackcap 8107
 PCAR Blackcap 8052

R B Active Duty 010
 OCC Lucy 620
 Mytty In Focus
 PCAR Blackcap 4049

CED	BW	WW	YW	HP	Milk	Marb	RE	\$M	\$B	\$C
9	-.8	52	98	18.4	39	.41	.89	97	124	258
BW		205 Wt			365 Wt					
81		558			1076					

6 Pine Creek Capitalist 1162

DOB: 03/14/2021 Freeze Brand: 1162 Reg # 20274185

Connealy Capitalist 028
LD Capitalist 316
 LD Dixie Erica 2053

S A V Final Answer 0035
 Prides Pita of Conanga 8821
 C A Future Direction 5321
 LD Dixie Erica Oar 0853

Pine Creek Investment 4213J
PCAR Missy 7308
 PCAR Missy 8032

Sitz Investment 660Z
 PCAR Lady Bell 0354
 Sitz Valubull 9835
 PCAR Missy 6150

CED	BW	WW	YW	HP	Milk	Marb	RE	\$M	\$B	\$C
7	.4	62	107	11.1	35	.59	.58	65	147	256
BW		205 Wt			365 Wt					
82		650			1132					



Lot 6

7 Pine Creek Capitalist 1220

DOB: 03/18/2021 Freeze Brand: 1220 Reg # 20274174

Connealy Capitalist 028
LD Capitalist 316
 LD Dixie Erica 2053

S A V Final Answer 0035
 Prides Pita of Conanga 8821
 C A Future Direction 5321
 LD Dixie Erica Oar 0853

OCC Active Duty 522
PCAR Starlet 8008
 PCAR Starlet 6182

R B Active Duty 010
 OCC Lucy 620
 Sitz Final Product 765a
 PCAR Starlet 3104

CED	BW	WW	YW	HP	Milk	Marb	RE	\$M	\$B	\$C
10	1.2	63	109	10.5	22	.56	.61	63	139	243
BW		205 Wt			365 Wt					
76		541			1087					

8 Pine Creek Capitalist 1282

DOB: 03/23/2021 Freeze Brand: 1282 Reg # 20274177

Connealy Capitalist 028
LD Capitalist 316
 LD Dixie Erica 2053

S A V Final Answer 0035
 Prides Pita of Conanga 8821
 C A Future Direction 5321
 LD Dixie Erica Oar 0853

KG Alliance 1193
PCAR Heather Bloom 8131
 PCAR Heather Bloom 3197

Sitz Alliance 7544
 KG Rito Lady 9152
 Hoover Dam
 PCAR Heather Bloom 5162

CED	BW	WW	YW	HP	Milk	Marb	RE	\$M	\$B	\$C
10	-.3	53	107	10.6	35	.23	.58	65	126	228
BW		205 Wt			365 Wt					
83		565			1165					

9 Pine Creek Capitalist 1316

DOB: 03/28/2021 Freeze Brand: 1316 Reg # 20274179

Connealy Capitalist 028
LD Capitalist 316
 LD Dixie Erica 2053

S A V Final Answer 0035
 Prides Pita of Conanga 8821
 C A Future Direction 5321
 LD Dixie Erica Oar 0853

S Chisum 255
PCAR Erica Everelda 8146
 PCAR Erica Everelda 0184

S Chisum 6175
 S Blossom 0278
 Pine Creek Image Maker 7131
 PCAR Erica Everelda 6171

CED	BW	WW	YW	HP	Milk	Marb	RE	\$M	\$B	\$C
11	.2	72	113	11.3	31	.36	.39	76	106	213
BW		205 Wt			365 Wt					
80		592			1155					

10 Pine Creek Capitalist 1304

DOB: 03/25/2021 Freeze Brand: 1304 Reg # 20274172

Connealy Capitalist 028
LD Capitalist 316
 LD Dixie Erica 2053

S A V Final Answer 0035
 Prides Pita of Conanga 8821
 C A Future Direction 5321
 LD Dixie Erica Oar 0853

Sitz Bullseye 9994
PCAR Erica 8050
 PCAR Erica 8223

Mogck Bullseye
 Sitz Pride 0128
 Sitz Valubull 9835
 PCAR Erica 6087

CED	BW	WW	YW	HP	Milk	Marb	RE	\$M	\$B	\$C
7	1.6	69	119	9	30	.09	.67	69	131	239
BW		205 Wt			365 Wt					
80		527			1095					



Rooster

11 Pine Creek Bronc 1043

DOB: 02/15/2021 Freeze Brand: 1043 Reg # 20270251

Baldrige Bronc EF Commando 1366
 Baldrige Isabel Y69
Mr JT Bronc 818 WMR Timeless 458
 Miss JT Lady of Time 203 Miss JT Becky 506

KG Four Star 3036
 KG Jessi Lynn 4450
PCAR Ruby 9033 Pine Creek Investment 4213J
 PCAR Ruby 7313 PCAR Ruby 2281

CED	BW	WW	YW	HP	Milk	Marb	RE	\$M	\$B	\$C
14	-1.8	51	103	8.8	28	.48	.67	47	118	200
BW		205 Wt				365 Wt				
75		583				1151				

13 Pine Creek Bronc 1055J

DOB: 02/23/2021 Freeze Brand: 1055J Reg # 20271719

Baldrige Bronc EF Commando 1366
 Baldrige Isabel Y69
Mr JT Bronc 818 WMR Timeless 458
 Miss JT Lady of Time 203 Miss JT Becky 506

R B Active Duty 010
 OCC Lucy 620
PCAR Special Lady 9143J KG Alliance 1193
 PCAR Special Lady 5270J PCAR Special Lady 2031J

CED	BW	WW	YW	HP	Milk	Marb	RE	\$M	\$B	\$C
6	-.5	61	108	10.7	29	.29	.63	54	113	201
BW		205 Wt				365 Wt				
77		631				1181				

14 Pine Creek Bronc 1056J

DOB: 02/24/2021 Freeze Brand: 1056J Reg # 20271717

Baldrige Bronc EF Commando 1366
 Baldrige Isabel Y69
Mr JT Bronc 818 WMR Timeless 458
 Miss JT Lady of Time 203 Miss JT Becky 506

KG Four Star 3036
 KG Jessi Lynn 4450
PCAR Lady Bell 9063J S Chisum 255
 PCAR Lady Bell 7089 PCAR Lady Bell 1379

CED	BW	WW	YW	HP	Milk	Marb	RE	\$M	\$B	\$C
15	-2.4	66	122	16.8	37	.37	.66	54	141	237
BW		205 Wt				365 Wt				
70		666				1248				



12 Pine Creek Bronc 1053

DOB: 02/22/2021 Freeze Brand: 1053 Reg # 20270256

Baldrige Bronc EF Commando 1366
 Baldrige Isabel Y69
Mr JT Bronc 818 WMR Timeless 458
 Miss JT Lady of Time 203 Miss JT Becky 506

S Chisum 6175
 S Blossom 0278
PCAR Ruby 9167 Sitz Final Product 765a
 PCAR Ruby 6041 PCAR Ruby 1375

CED	BW	WW	YW	HP	Milk	Marb	RE	\$M	\$B	\$C
10	.9	51	90	10.4	30	.38	.82	38	113	185
BW		205 Wt				365 Wt				
68		570				1084				



Lot 13



Lot 14

15 Pine Creek Bronc 1063J

DOB: 02/27/2021 Freeze Brand: 1063J Reg # 20271713

Baldrige Bronc EF Commando 1366
 Baldrige Isabel Y69
Mr JT Bronc 818 WMR Timeless 458
 Miss JT Lady of Time 203 Miss JT Becky 506

Connealy Capitalist 028
 LD Dixie Erica 2053
PCAR Barbarmere Nell 9009J KG High Regard 5087
 PCAR Barbarmere Nell 7091 PCAR Barbarmere Nell 1204

CED	BW	WW	YW	HP	Milk	Marb	RE	\$M	\$B	\$C
8	-.2	56	92	8.4	24	.75	.71	47	130	216
BW		205 Wt				365 Wt				
74		564				1006				

16 Pine Creek Bronc 1068J

DOB: 02/28/2021 Freeze Brand: 1068J Reg # 20271720

Baldrige Bronc
Mr JT Bronc 818
 Miss JT Lady of Time 203

EF Commando 1366
 Baldrige Isabel Y69
 WMR Timeless 458
 Miss JT Becky 506

R B Active Duty 010
 OCC Active Duty 522
 OCC Lucy 620
 Pine Creek Investment 4213J
 PCAR Eisa Evergreen 6331 PCAR Eisa Evergreen 3263

CED	BW	WW	YW	HP	Milk	Marb	RE	\$M	\$B	\$C
7	.6	61	114	11.3	35	.28	.65	51	123	211
BW		205 Wt				365 Wt				
76		610				1130				



17 Pine Creek Bronc 1097J

DOB: 03/09/2021 Freeze Brand: 1097J Reg # 20271727

Baldrige Bronc
Mr JT Bronc 818
 Miss JT Lady of Time 203

EF Commando 1366
 Baldrige Isabel Y69
 WMR Timeless 458
 Miss JT Becky 506

Sitz Investment 660z
 Pine Creek Investment 4213J
 PCAR Lady Bell
 Mr JT Ribeye 964
 PCAR Emma E 1197 PCAR Emma E 6172

CED	BW	WW	YW	HP	Milk	Marb	RE	\$M	\$B	\$C
8	.7	62	117	10.3	21	.54	.45	53	135	228
BW		205 Wt				365 Wt				
68		552				1088				

18 Pine Creek Bronc 1116

DOB: 03/13/2021 Freeze Brand: 1116 Reg # 20271715

Baldrige Bronc
Mr JT Bronc 818
 Miss JT Lady of Time 203

EF Commando 1366
 Baldrige Isabel Y69
 WMR Timeless 458
 Miss JT Becky 506

KG Four Star 6107
 PCAR Everelda Entense 9058
 PCAR Everelda Entense 77186 PCAR Everelda Entense 3018

CED	BW	WW	YW	HP	Milk	Marb	RE	\$M	\$B	\$C
19	-2.1	61	116	8.7	31	.48	.67	45	128	211
BW		205 Wt				365 Wt				
60		528				1106				



American Angus Association \$Value Indexes

Maternal Weaned Calf Value (\$M)

is an index expressed in dollars per head, predicts profitability differences in progeny due to genetics from conception to weaning. \$M is built off of a self-replacing herd model where commercial cattlemen replace 25% of their breeding females in the first generation and 20% in subsequent generations. Remaining cull females and all male progeny are sold as feeder calves. Increased selection pressure on \$M aims to decrease overall mature cow size and improve foot structure and fertility while maintaining weaning weights consistent with today's production.

Beef Value (\$B)

is an index expressed in dollars per carcass, facilitates simultaneous multi-trait genetic selection for feedlot and carcass merit. \$B represents the expected average differences in the progeny postweaning performance and carcass value compared to progeny of other sires. This index assumes commercial producers wean all male and female progeny, retain ownership of these animals through the feedlot phase and market these animals on a quality-based carcass grid.

Combined Value (\$C)

is an index expressed in dollars per head, includes all traits that make up both \$M and \$B with the objective that commercial producers will replace 20% of their breeding females per year with replacement heifers retained within their own herd. The remaining cull heifer and steer progeny are then assumed to be sent to the feedlot where the producers retain ownership of those cattle and eventually sell them on a quality-based carcass merit grid.

Dollar value indexes, or \$Values, are a tool used to select for several traits at once based on a specific breeding objective. An economic index approach takes into account genetic and economic values as well as the relationships between traits to select for profit.

19 Pine Creek Enhance 1070



DOB: 02/28/2021 Freeze Brand: 1070 Reg # 20271718

SydGen Enhance
Mr JT Enhance 909
 Miss JT Alli 740

SydGen Exceed 3223
 SydGen Rita 2618
 KG Alliance 1193
 Miss JT Proud Lady 462

Mitty In Focus
 Pine Creek IN Focus 7022
PCAR Barbaramere Nell 9085
 PCAR Barbaramere Nell 6050

PCAR Everelda Entense 5051
 Connealy Lead On
 PCAR Barbaramere Nell 312

CED	BW	WW	YW	HP	Milk	Marb	RE	\$M	\$B	\$C
7	.2	73	135	14.9	40	.87	.48	63	159	269
BW		205 Wt				365 Wt				
72		597				1275				

20 Pine Creek Enhance 1080



DOB: 03/05/2021 Freeze Brand: 1080 Reg # 20271714

SydGen Enhance
Mr JT Enhance 909
 Miss JT Alli 740

SydGen Exceed 3223
 SydGen Rita 2618
 KG Alliance 1193
 Miss JT Proud Lady 462

Sitz Investment 660z
 Pine Creek Investment 4213J
PCAR Ellie Elite 9270
 PCAR Ellie Elite 1136

PCAR Lady Bell 0354
 Mr JT Ribeye 946
 PCAR Ellie Elite 4082

CED	BW	WW	YW	HP	Milk	Marb	RE	\$M	\$B	\$C
11	-2	47	91	15.3	35	.88	.11	77	121	234
BW		205 Wt				365 Wt				
69		515				1001				

21 Pine Creek Enhance 1089J



DOB: 03/08/2021 Freeze Brand: 1089J Reg # 20271729

SydGen Enhance
Mr JT Enhance 909
 Miss JT Alli 740

SydGen Exceed 3223
 SydGen Rita 2618
 KG Alliance 1193
 Miss JT Proud Lady 462

Mogck Bullseye
 Sitz Bullseye 9994
PCAR Grace Cora 9083J
 PCAR PJ 8010

Sitz Pride 0128
 Sitz Valubull 9835
 PCAR PJ 6210

CED	BW	WW	YW	HP	Milk	Marb	RE	\$M	\$B	\$C
8	-.6	61	115	15.8	27	.64	.54	64	130	233
BW		205 Wt				365 Wt				
73		538				1000				



22 Pine Creek Enhance 1230J



DOB: 03/18/2021 Freeze Brand: 1230J Reg # 20271724

SydGen Enhance
Mr JT Enhance 909
 Miss JT Alli 740

SydGen Exceed 3223
 SydGen Rita 2618
 KG Alliance 1193
 Miss JT Proud Lady 462

S Chisum 255
 Pine Creek Chisum 7008
PCAR Starlet 9327J
 PCAR Starlet 6123J

PCAR Henrietta Pride 5040
 Pine Creek Investment 4213J
 PCAR Starlet 2057J

CED	BW	WW	YW	HP	Milk	Marb	RE	\$M	\$B	\$C
1	1.8	65	115	13.3	31	.82	.55	72	139	252
BW		205 Wt				365 Wt				
76		590				1065				

23 Pine Creek Enhance 1303



DOB: 03/25/2021 Freeze Brand: 1303 Reg # 20271716

SydGen Enhance
Mr JT Enhance 909
 Miss JT Alli 740

SydGen Exceed 3223
 SydGen Rita 2618
 KG Alliance 1193
 Miss JT Proud Lady 462

R B Active Duty 010
 OCC Active Duty 522
PCAR Barbaramere Nell 9094
 PCAR Barbaramere Nell 1290

OCC Lucy 620
 Sitz Dash 10277
 PCAR Barbaramere Nell 5039

CED	BW	WW	YW	HP	Milk	Marb	RE	\$M	\$B	\$C
3	1	67	119	15.4	34	1.03	.63	63	169	282
BW		205 Wt				365 Wt				
75		553				1050				



24 Pine Creek Enhance 1322J



DOB: 03/29/2021 Freeze Brand: 1322J Reg # 20271728

SydGen Enhance
Mr JT Enhance 909
 Miss JT Alli

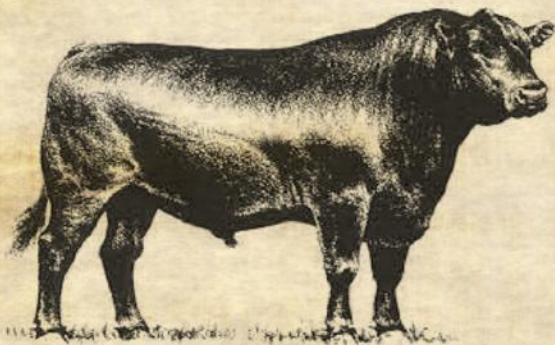
SydGen Exceed 3223
 SydGen Rita 2618
 KG Alliance 1193
 Miss JT Proud Lady 462

S Chisum 255
PCAR Lady of Vision 9026J
 PCAR Lady of Vision 7202J

S Blossom 0278
 Sitz Bullseye 9994
 PCAR Lady of Vision 4030J

CED	BW	WW	YW	HP	Milk	Marb	RE	\$M	\$B	\$C
5	2	71	127	15.3	23	.90	.52	69	160	277
BW		205 Wt				365 Wt				
74		595				1118				

Semen For Sale



- Pine Creek Alliance 7255
- Pine Creek Investment 4213J
- Pine Creek Right Time 1147
- Sitz Bullseye 9994
- Sitz New Design 9685
- Sitz Right Answer 644Y
- Sitz Traveler 8180
- Sitz Alliance 6595
- Sitz Resilient 10208

Please call Lyle at 605-515-0118 or 605-748-2217 to discuss quantity and price.

25 Pine Creek Alliance 1045

DOB: 02/15/2021 Freeze Brand: 1045 Reg # 20270257
 KG Alliance 1193
Pine Creek Alliance 7255
 PCAR Pride 3046
 KG High Regard 5087
PCAR Polly 9312
 PCAR Polly 0050

Sitz Alliance 7544
 KG Rito Lady 9152
 Hoover Dam
 PCAR Pride 0085
 KG High Regard 2073
 KG Princess 3259
 Pine Creek IN Focus 7022
 PCAR Polly 6248

CED	BW	WW	YW	HP	Milk	Marb	RE	\$M	\$B	\$C
2	2.7	60	113	13.5	32	.72	.49	65	146	254
BW		205 Wt			365 Wt					
81		557			1120					

26 Pine Creek Alliance 1050J

DOB: 02/18/2021 Freeze Brand: 1050J Reg # 20270254
 KG Alliance 1193
Pine Creek Alliance 7255
 PCAR Pride 3046
 M A Earnan 7046
PCAR Miss Jane 9346J
 PCAR Miss Jane 4198J

Sitz Alliance 7544
 KG Rito Lady 9152
 Hoover Dam
 PCAR Pride 0085
 Connealy Earnan 1383
 M A Queen Kimberly 08M
 KG Alliance 1193
 Miss JT Jane 478

CED	BW	WW	YW	HP	Milk	Marb	RE	\$M	\$B	\$C
8	-.5	56	109	12.5	29	.51	.40	58	137	236
BW		205 Wt			365 Wt					
73		568			1104					

27 Pine Creek Alliance 1052

DOB: 02/21/2021 Freeze Brand: 1052 Reg # 20274164
 KG Alliance 1193
Pine Creek Alliance 7255
 PCAR Pride 3046
 Pine Creek Investment 4213J
PCAR Emma E 9326
 PCAR Emme E 2028

Sitz Alliance 7544
 KG Rito Lady 9152
 Hoover Dam
 PCAR Pride 0085
 Sitz Investment 660Z
 PCAR Lady Bell 0354
 Hoover Dam
 PCAR Emma E 0022

CED	BW	WW	YW	HP	Milk	Marb	RE	\$M	\$B	\$C
5	.8	54	103	14.5	20	.61	.69	69	162	279
BW		205 Wt			365 Wt					
75		547			1070					



Lot 26

28 Pine Creek Alliance 1243

DOB: 03/20/2021 Freeze Brand: 1243 Reg # 20275338

KG Alliance 1193
Pine Creek Alliance 7255
 PCAR Pride 3046

Sitz Alliance 7544
 KG Rito Lady 9152
 Hoover Dam
 PCAR Pride 0085
 Ideal 5570 of 0452 0534
 Ideal 7814 of 2P88 086
 Sitz Upward 307R
 PCAR Erica 0174

Ideal 9512 of 5570 7814

PCAR Erica 5138
 PCAR Erica 0201

CED	BW	WW	YW	HP	Milk	Marb	RE	\$M	\$B	\$C
4	.4	69	123	16.1	34	.55	.35	72	145	260
BW		205 Wt			365 Wt					
88		671			1194					



Lot 28

29 Pine Creek Alliance 1268J

DOB: 03/21/2021 Freeze Brand: 1268J Reg # 20270242

KG Alliance 1193
Pine Creek Alliance 7255
 PCAR Pride 3046

Sitz Alliance 7544
 KG Rito Lady 9152
 Hoover Dam
 PCAR Pride 0085
 Mogck Bullseye
 Sitz Pride 0128
 Hoover Dam
 PCAR Lady 7227J

Sitz Bullseye 9994

PCAR Lady 7166J
 PCAR Lady 3205J

CED	BW	WW	YW	HP	Milk	Marb	RE	\$M	\$B	\$C
10	-.7	55	110	15.1	35	.99	.31	74	141	257
BW		205 Wt			365 Wt					
74		668			1231					



Lot 29

30 Pine Creek Alliance 1296

DOB: 03/24/2021 Freeze Brand: 1296 Reg # 20270240

KG Alliance 1193
Pine Creek Alliance 7255
 PCAR Pride 3046

Sitz Alliance 7544
 KG Rito Lady 9152
 Hoover Dam
 PCAR Pride 0085
 Connealy Final Product
 Sitz Pride 88T
 Mr JT Ribeye 946
 PCAR Missy 9221

Sitz Final Product 765a

PCAR Missy 6304
 PCAR Missy 2199

CED	BW	WW	YW	HP	Milk	Marb	RE	\$M	\$B	\$C
10	1.6	51	98	13.5	26	.64	.57	54	116	204
BW		205 Wt			365 Wt					
87		667			1181					

31 Pine Creek Constitution 1278

DOB: 03/23/2021 Freeze Brand: 1278 Reg # 20275282

Basin Payweight 1682
K C F Constitution

K C F Miss Homestead C452

Sitz Alliance 7544
 KG Rito Lady 9152
 K C F Bennett Homestead
 K C F Miss Contrast Z607

Hoover Dam
PCAR Barbaramere 2015

PCAR Barbaramere 0044

Syd Gen C C & 7
 Erica of Ellston C124
 Sitz Upward 307R
 PCAR Barbaramere 5040

CED	BW	WW	YW	HP	Milk	Marb	RE	\$M	\$B	\$C
11	-1.3	57	100	10.9	36	.63	.35	67	137	245
BW		205 Wt			365 Wt					
78		504			1080					

32 Pine Creek Constitution 1309J

DOB: 03/26/2021 Freeze Brand: 1309J Reg # 20275234

Basin Payweight 1682
K C F Constitution
 K C F Miss Homestead C452

Sitz Alliance 7544
 KG Rito Lady 9152
 K C F Bennett Homestead
 K C F Miss Contrast Z607

S Chisum 255

PCAR Esther 8128J
 PCAR Esther 2030J

S Chisum 6175
 S Blossom 0278
 WK Bobcat
 Miss JT Esther 446

CED	BW	WW	YW	HP	Milk	Marb	RE	\$M	\$B	\$C
11	.4	68	119	10.2	32	.61	.30	56	117	208
BW		205 Wt			365 Wt					
81		611			1161					

33 Pine Creek Constitution 1312

DOB: 03/27/2021 Freeze Brand: 1312 Reg # 20275237

Basin Payweight 1682
K C F Constitution
 K C F Miss Homestead C452

Sitz Alliance 7544
 KG Rito Lady 9152
 K C F Bennett Homestead
 K C F Miss Contrast Z607

S Chisum 255

PCAR Heather Bloom 8171
 PCAR Heather Bloom 5013

S Chisum 6175
 S Blossom 0278
 Sitz Final Product 765a
 PCAR Heather Bloom 3197

CED	BW	WW	YW	HP	Milk	Marb	RE	\$M	\$B	\$C
9	.9	69	106	7.8	23	.58	.54	76	129	243
BW		205 Wt			365 Wt					
89		612			1140					

34 Pine Creek Epic 1346

DOB: 04/04/2021 Freeze Brand: 1346 Reg # 20271731

3F Epic 4631
Pine Creek Epic 9128
 PCAR Erica 6082

Varilek Product 2010 04
 Zebo Queen 1072
 Sitz Final Product 765a
 PCAR Erica 0201

S Chisum 255
PCAR Heather Bloom 8171
 PCAR Erica 2064

S Chisum 6175
 S Blossom 0278
 WMR Timeless 458
 PCAR Erica 8134

CED	BW	WW	YW	HP	Milk	Marb	RE	\$M	\$B	\$C
4	1.3	75	126	12.1	23	.57	.76	64	128	230
BW		205 Wt			365 Wt					
83		553			1080					

36 Pine Creek Accomplish 1292J

DOB: 03/23/2021 Freeze Brand: 1292J Reg # 20275225

Poss Achievement
Sitz Accomplishment 720F
 Sitz Barbaramere Nell 166D

Poss Lasting Impact 3118
 Poss Erica 327
 S A V Resource 1441
 Sitz Barbaramere Nell 14Y

S Chisum 255
PCAR Special Lady 8181J
 PCAR Special Lady 5270J

S Chisum 6175
 S Blossom 0278
 KG Alliance 1193
 PCAR Special Lady 2031J

CED	BW	WW	YW	HP	Milk	Marb	RE	\$M	\$B	\$C
13	-1.4	61	110	15.4	29	1.08	.51	81	143	266
BW		205 Wt			365 Wt					
76		572			1054					



35 Pine Creek Epic 1375

DOB: 04/10/2021 Freeze Brand: 1372 Reg # 20271725

3F Epic 4631
Pine Creek Epic 9128
 PCAR Erica 6082

Varilek Product 2010 04
 Zebo Queen 1072
 Sitz Final Product 765a
 PCAR Erica 0201

Sitz Bullseye 9994
PCAR Everelda Entense 8083
 PCAR Everelda Entense 9096

Mogck Bullseye
 Sitz Pride 0128
 Pine Creek Image Maker 7131
 PCAR Everelda Entense 6070

CED	BW	WW	YW	HP	Milk	Marb	RE	\$M	\$B	\$C
8	.1	67	123	10.5	36	.39	.49	45	118	198
BW		205 Wt			365 Wt					
72		625			1160					



Lot 36

Pine Creek Fall 2022



37 Pine Creek Bullseye 1356

DOB: 04/07/2021 Freeze Brand: 1356 Reg # 20270258

Sitz Bullseye 9994
Pine Creek Bullseye 7260
 PCAR Emma E 0032

Mogck Bullseye
 Sitz Pride 0128
 Pine Creek IN Focus 7022
 PCAR Emma E 5122

Sitz New Design 9685
PCAR Everelda Entense 4121
 PCAR Everelda Entense 9171

Bluegrass New Design 205
 Sitz Elsiemere 693
 Sitz Valubull 9835
 PCAR Everelda Entense 2243

CED	BW	WW	YW	HP	Milk	Marb	RE	\$M	\$B	\$C
15	-2.6	62	110	8.5	37	.52	.37	59	118	212
BW		205 Wt			365 Wt					
74		611			1129					

38 Pine Creek Chisum 1371

DOB: 04/10/2021 Freeze Brand: 1371 Reg # 20270255

S Chisum 255
Pine Creek Chisum 7008
 PCAR Henrietta Pride 5040

S Chisum 6175
 S Blossom 0278
 Sitz Investment 660Z
 PCAR Henrietta Pride 0129

Sitz Right Answer 644Y
PCAR Starlet 3023
 PCAR Starlet 1132

Connealy Right Answer 746
 Sitz Barbaramere Jet 191W
 Ideal 9512 of 5570 7814
 PCAR Starlet 9149

CED	BW	WW	YW	HP	Milk	Marb	RE	\$M	\$B	\$C
10	-1.4	42	71	9.4	31	.37	.39	62	108	202
BW		205 Wt			365 Wt					
82		633			1090					



Created by Angus Genetics Inc. (AGI) and powered by Neogen GeneSeek, our sale cattle have been tested with the first DNA profile designed specifically for Angus cattle, Angus GSSM.

Each marker is intentionally chosen from the Angus genome to drive the Angus breed into the future. It offers maximum accuracy for genomically enhanced EPDs at great value. Testing heifer and bull calves ultimately allows you to reap the benefits of faster genetic gain in your commercial herd. With Angus GS, it's all about you, our customer.



Trait	Progeny Equivalents
Calving Ease Direct (CED)	26
Birth Weight (BW)	23
Weaning Weight (WW)	27
Yearling Weight (YW)	23
Dry Matter Intake (DMI)	12
Yearling height (YH)	17
Scrotal Circumference (SC)	15
Docility (DOC)	12
Claw Set (CLAW)	10
Foot Angle (ANGLE)	10
Heifer Pregnancy (HP)	17
Calving Ease Maternal (CEM)	20
Milk	36
Mature Weight (MW)	15
Mature Height (MH)	9
Carcass Weight (CW)	15
Carcass Marbling (MARB)	11
Carcass Ribeye (RE)	17
Carcass Fat (FAT)	14

Make Angus GS work for you at Angus.org/AGI/AngusGS or contact your Neogen GeneSeek representative at (402) 435-0665.



A.I. Bred Heifers

Lots 40-44



41 PCAR Lady 1274

DOB: 03/22/2021 Freeze Brand: 1274 Reg # 20274188

Connealy Capitalist 028
LD Capitalist 316
 LD Dixie Erica 2053

S A V Final Answer 0035
 Prides Pita of Conanga 8821
 C A Future Direction 5321
 LD Dixie Erica Oar 0853

KG Alliance 1193
PCAR Lady 7235
 PCAR Lady 2089

Sitz Alliance 7544
 KG Rito Lady 9152
 Ideal 9512 of 5570 7814
 PCAR Lady 6033

CED	BW	WW	YW	HP	Milk	Marb	RE	\$M	\$B	\$C
0	1.8	84	148	12.3	31	.56	.49	73	155	274
BW		205 Wt			365 Wt					
90		680			974					

• AI bred to Broadview (Reg # 19421003) Due Date: 02/10/2023

42 PCAR Mae 1332J

DOB: 03/31/2021 Freeze Brand: 1332J Reg # 20263609

Sitz Bullseye 9994
Pine Creek Bullseye 7260
 PCAR Emma E 0032

Mogck Bullseye
 Sitz Pride 0128
 Pine Creek IN Focus 7022
 PCAR Emma E 5122

Sitz Final Product 765a
PCAR Mae 5122J
 PCAR Mae 0218J

Connealy Final Product
 Sitz Pride 88T
 Sitz New Design 9685
 PCAR Equalizer 7171J

CED	BW	WW	YW	HP	Milk	Marb	RE	\$M	\$B	\$C
14	-.8	57	108	15.7	27	.42	.48	71	118	224
BW		205 Wt			365 Wt					
68		576			861					

• AI bred to True North (Reg # 19405246) Due Date: 02/10/2023



40 PCAR Henrietta Pride 1101J

DOB: 03/10/2021 Freeze Brand: 1101J Reg # 20275273

Poss Achievement
Sitz Accomplishment 720F
 Sitz Barbaramere Nell 166D

Poss Lasting Impact 3118
 Poss Erica 327
 S A V Resource 1441
 Sitz Barbaramere Nell 14Y

OCC Active Duty 522
PCAR Henrietta Pride 7022J
 PCAR Henrietta Pride 5035J

R B Active Duty 010
 OCC Lucy 620
 Sitz Final Product 765a
 PCAR Henrietta Pride 7167J

CED	BW	WW	YW	HP	Milk	Marb	RE	\$M	\$B	\$C
9	.8	57	94	16.7	25	.59	.48	84	115	233
BW		205 Wt			365 Wt					
75		605			811					

• AI bred to Safe Deposit (Reg # 19461028) Due date: 02/10/2023



43 PCAR Barbaramere Nell 1369

DOB: 04/10/2021 Freeze Brand: 1369 Reg # 20263600

Sitz Bullseye 9994
Pine Creek Bullseye 7260
 PCAR Emma E 0032

Mogck Bullseye
 Sitz Pride 0128
 Pine Creek IN Focus 7022
 PCAR Emma E 5122

Pine Creek Valubull 8110
PCAR Barbaramere Nell 0246
 PCAR Barbaramere Nell 5039

Sitz Valubull 9835
 PCAR Erica Everelda 1350
 Pine Creek Dateline 3132
 PCAR Barbaramere Nell 1137

CED	BW	WW	YW	HP	Milk	Marb	RE	\$M	\$B	\$C
9	-.1	50	97	11.7	42	.46	.39	51	121	208
BW		205 Wt			365 Wt					
80		605			841					

• AI bred to Safe Deposit (Reg # 19461028) Due Date: 02/10/2023

44 PCAR Emma E 1392J

DOB: 04/18/2021 Freeze Brand: 1392J Reg # 20263616

BUBS Southern Charm AA31
Pine Creek Charm 9212
 PCAR Missy 5134

Silveiras Conversion 8064
 Hickory Hill Erica 009
 Sitz Investment 660Z
 PCAR Missy 6150

OCC Active Duty 522
PCAR Emma E 7004J
 PCAR Lady 5002J

R B Active Duty 010
 OCC Lucy 620
 Sitz Final Product 765a
 PCAR Lady 3182J

CED	BW	WW	YW	HP	Milk	Marb	RE	\$M	\$B	\$C
7	1.2	59	105	15.6	27	.41	.55	86	124	247
BW		205 Wt			365 Wt					
82		605			808					

• AI bred to Safe Deposit (Reg # 19461028) Due Date: 02/10/2023

Bull Bred Sires

Pine Creek Relevance 0076



DOB: 03/06/2020 Freeze Brand: 0076 Reg # 19951065
 Connealy Confidence 0100
 Connealy Confidence Pluss
Woodhill Relevance
 Woodhill Blackbird X197-Z7
 Connealy Confidence 0100
 Elbanna of Conanga 1209
 Hoover Dam
 Woodhill Blackbird U80-X197
 Sitz Alliance 7544
 KG Alliance 1193
 KG Rito Lady 9152
PCAR Ruby 4021
 Mr JT Ribeye 946
 PCAR Ruby 2281
 PCAR Ruby 8108

CED	BW	WW	YW	CEM	Milk
8	-2	77	140	2	31

Pine Creek Relevance 0102

DOB: 03/09/2020 Freeze Brand: 0102 Reg # 19951061
 Connealy Confidence 0100
 Connealy Confidence Pluss
Woodhill Relevance
 Woodhill Blackbird X197-Z7
 Connealy Confidence 0100
 Elbanna of Conanga 1209
 Hoover Dam
 Woodhill Blackbird U80-X197
 Sitz Alliance 7544
 KG Alliance 1193
 KG Rito Lady 9152
PCAR Mssy 4089
 Mr JT Ribeye 946
 PCAR Mssy 6150
 PCAR Mssy 8108
 PCAR Mssy 352

CED	BW	WW	YW	CEM	Milk
11	-2.5	68	128	10	30

45 PCAR Missy 1301J



DOB: 03/25/2021 Freeze Brand: 1301J Reg # 20288610
 KG Alliance 1193
Pine Creek Alliance 7255
 PCAR Pride 3046
 Sitz Alliance 7544
 KG Rito Lady 9152
 Hoover Dam
 PCAR Pride 0085
 S Chisum 6175
 S Blossom 0278
PCAR Missy 7101
 Mr JT Power Design 4109
 PCAR Missy 9221
 PCAR Missy 5049

CED	BW	WW	YW	HP	Milk	Marb	RE	\$M	\$B	\$C
8	-8	60	110	10.3	23	.90	.38	62	155	263
BW		205 Wt			365 Wt					
68		589			797					

• Bull Bred. Due Date: 02/15/2023

46 PCAR Lady 1274

DOB: 02/28/2021 Freeze Brand: 1067J Reg # 20263634
 SydGen Enhance
Mr JT Enhance 909
 Miss JT Alli 740
 SydGen Exceed 3223
 SydGen Rita 2618
 KG Alliance 1193
 Miss JT Proud Lady 462
 R B Active Duty 010
 OCC Active Duty 522
 OCC Lucy 620
PCAR Missy 9030J
 S Chisum 255
 PCAR Missy 7101
 PCAR Missy 9221

CED	BW	WW	YW	HP	Milk	Marb	RE	\$M	\$B	\$C
13	-1.3	53	102	17.5	40	.52	.19	71	122	229
BW		205 Wt			365 Wt					
60		522			789					

• Bull Bred. Due Date: 02/10/2023

47 PCAR Polly 1027

DOB: 02/13/2021 Freeze Brand: 1027 Reg # 20263593
 KG Alliance 1193
Pine Creek Alliance 7255
 PCAR Pride 3046
 Sitz Alliance 7544
 KG Rito Lady 9152
 Hoover Dam
 PCAR Pride 0085
 R B Active Duty 010
 OCC Active Duty 522
 OCC Lucy 620
PCAR Polly 9139
 Pine Creek Thunder 1331
 PCAR Polly 3134
 PCAR Polly 359

CED	BW	WW	YW	HP	Milk	Marb	RE	\$M	\$B	\$C
4	2.8	67	117	10.6	33	.25	.59	58	131	228
BW		205 Wt			365 Wt					
69		588			884					

• Bull Bred. Due Date: 02/20/2023



Lot 47



Lot 48

48 PCAR Special Lady 1227J



DOB: 03/18/2021 Freeze Brand: 1227J Reg # 20263570
 Mogck Bullseye
Sitz Bullseye 9994
 Sitz Pride 0128
 MOGCK Sure Shot
 Mogck Mary 1255
 Sitz Upward 307R
 Sitz Pride 2561
 Sitz Alliance 7544
 KG Alliance 1193
 KG Rito Lady 9152
PCAR Special Lady 5270J
 Kesslers Frontman R001
 PCAR Special Lady 2031J
 Miss JT Special Lady 464

CED	BW	WW	YW	HP	Milk	Marb	RE	\$M	\$B	\$C
-4	3.3	88	148	19.3	35	.67	.77	86	179	318
BW		205 Wt			365 Wt					
84		631			917					

• Bull Bred. Due Date: 02/20/2023

49 PCAR Everelda Entense 1368

DOB: 04/09/2021 Freeze Brand: 1368 Reg # 20263602

S Chisum 255
Pine Creek Chisum 7008
 PCAR Henrietta Pride 5040

S Chisum 6175
 S Blossom 0278
 Sitz Investment 660Z
 PCAR Henrietta Pride 0129

Pine Creek Upward 0017
PCAR Everelda Entense 2103
 PCAR Everelda Entense 0052

Sitz Upward 307R
 PCAR Pride 6051
 Hoover Dam
 PCAR Everelda Entense 0440

CED	BW	WW	YW	HP	Milk	Marb	RE	\$M	\$B	\$C	
13	-1.9	67	109	12.7	22	.44	.64	72	139	252	
BW		205 Wt			365 Wt						
62		650			924						

• Bull Bred. Due Date: 02/20/2023

51 PCAR Lady 1223

DOB: 03/18/2021 Freeze Brand: 1223 Reg # 20275347

Sitz Bullseye 9994
Pine Creek Bullseye 7260
 PCAR Emma E 0032

Mogck Bullseye
 Sitz Pride 0128
 Pine Creek IN Focus 7022
 PCAR Emma E 5122

Pine Creek Heritage 1215
PCAR Lady 3069
 PCAR Lady 8009

SydGen C C & 7
 PCAR Barb Nell 5027
 Sitz Valubull 9835
 PCAR Lady 6033

CED	BW	WW	YW	HP	Milk	Marb	RE	\$M	\$B	\$C	
12	-1.8	42	84	10	25	.51	.42	67	117	219	
BW		205 Wt			365 Wt						
68		502			763						

• Bull Bred. Due Date: 02/22/2023

53 PCAR Lady 1298J

DOB: 03/24/2021 Freeze Brand: 1298J Reg # 20275212

Poss Achievement
Sitz Accomplishment 720F
 Sitz Barbaramere Nell 166D

Poss Lasting Impact 3118
 Poss Erica 327
 S A V Resource 1441
 Sitz Barbaramere Nell 14Y

Pine Creek Alliance 4228J
PCAR Lady 8278J
 PCAR Lady 7227J

KG Alliance 1193
 PCAR Equalizer 7171J
 Pine Creek Dateleing 5133
 P C A R Lady 724

CED	BW	WW	YW	HP	Milk	Marb	RE	\$M	\$B	\$C	
6	.1	60	107	16.8	35	.59	.46	78	130	247	
BW		205 Wt			365 Wt						
82		571			942						

• Bull Bred. Due Date: 02/22/2023

54 PCAR Pride 1127

DOB: 03/13/2021 Freeze Brand: 1127 Reg # 20263554

R B Active Duty 010
OCC Active Duty 522
 OCC Lucy 620

LCC New Standard
 B A Lady 6807 305
 Kahn Broadband R A 94L
 Innisway Ms VRD 232

Pine Creek Image Maker 7131
PCAR Pride 0085
 PCAR Pride 4005

H A Image Maker 0415
 PCAR Ruby 0240
 Woodhill Foresight
 PCAR Pride 2201

CED	BW	WW	YW	HP	Milk	Marb	RE	\$M	\$B	\$C	
3	2.4	47	79	14	31	.23	.22	73	102	205	
BW		205 Wt			365 Wt						
80		531			771						

• Bull Bred. Due Date: 02/22/2023

50 PCAR Ruby 1381

DOB: 04/13/2021 Freeze Brand: 1381 Reg # 20263625

BUBS Southern Charm AA31
Pine Creek Charm 9212
 PCAR Missy 5134

Silveriras Conversion 8064
 Hickory Hill Erica 009
 Sitz Investment 660Z
 PCAR Missy 6150

Pine Creek Investment 4213J
PCAR Ruby 7313
 PCAR Ruby 2281

Sitz Investment 660Z
 PCAR Lady Bell 0354
 Mr JT Ribeye 946
 PCAR Ruby 8108

CED	BW	WW	YW	HP	Milk	Marb	RE	\$M	\$B	\$C	
7	.7	56	108	13.1	33	.65	.70	53	142	237	
BW		205 Wt			365 Wt						
72		556			746						

• Bull Bred. Due Date: 02/20/2023

52 PCAR Henrietta Pride 1242J

DOB: 03/19/2021 Freeze Brand: 1242J Reg # 20263587

KG Alliance 1193
Pine Creek Alliance 7255
 PCAR Pride 3046

Sitz Alliance 7544
 KG Rito Lady 9152
 Hoover Dam
 PCAR Pride 0085

Pine Creek Investment 4213J
PCAR Henrietta Pride 7076J
 PCAR Henrietta Pride 1342J

Sitz Investment 660Z
 PCAR Lady Bell 0354
 Mr JT Thunder 959
 PCAR Henrietta Pride 7167J

CED	BW	WW	YW	HP	Milk	Marb	RE	\$M	\$B	\$C	
7	.9	66	128	10.7	34	.51	.57	42	168	260	
BW		205 Wt			365 Wt						
79		636			913						

• Bull Bred. Due Date: 02/22/2023



Lot 53

55 PCAR Henrietta Pride 1136

DOB: 03/13/2021 Freeze Brand: 1136 Reg # 20274198

Connealy Capitalist 028
LD Capitalist 316
 LD Dixie Erica 2053

S A V Final Answer 0035
 Prides Pita of Conanga 8821
 C A Future Direction 5321
 LD Dixie Erica Oar 0853

Sitz Investment 660Z
PCAR Henrietta Pride 5040
 PCAR Henrietta Pride 0129

Connealy Final Product
 Sitz Ellunas Elite 656T
 Pine Creek IN Focus 7022
 PCAR Henrietta Pride 2166

CED	BW	WW	YW	HP	Milk	Marb	RE	\$M	\$B	\$C	
6	.5	74	124	14.6	29	.54	.67	81	151	277	
BW		205 Wt			365 Wt						
80		646			910						

• Bull Bred. Due Date: 02/22/2023

56 PCAR Emma E 1200

DOB: 03/17/2021 Freeze Brand: 1200 Reg # 20274201
 Connealy Capitalist 028 S A V Final Answer 0035
LD Capitalist 316 Prides Pita of Conanga 8821
 LD Dixie Erica 2053 C A Future Direction 5321
 LD Dixie Erica Oar 0853

Sitz Investment 660Z Connealy Final Product
 Sitz Ellunas Elite 656T
PCAR Emma E 5156 Mr JT Power Design 4109
 PCAR Emma E 1347 PCAR Emma E 304

CED	BW	WW	YW	HP	Milk	Marb	RE	\$M	\$B	\$C
6	1.6	74	128	13.1	31	.61	.48	82	139	262
BW		205 Wt			365 Wt					
80		611			902					

• Bull Bred. Due Date: 02/22/2023

58 PCAR Lady 1394J

DOB: 04/18/2021 Freeze Brand: 1394J Reg # 20263627
 3F Epic 4631 Varilek Product 2010 04
Pine Creek Epic 9128 Zebo Queen 1072
 PCAR Erica 6082 Sitz Final Product 765a
 PCAR Erica 0201

Pine Creek Alliance 5254 KG Alliance 1193
 PCAR Emma E 0032
PCAR Lady 8041J Pine Creek Investment 4213J
 PCAR Lady 6294J PCAR Lady 1261J

CED	BW	WW	YW	HP	Milk	Marb	RE	\$M	\$B	\$C
11	-1.6	49	105	14.3	34	.40	.26	50	111	194
BW		205 Wt			365 Wt					
64		486			795					

• Bull Bred. Due Date: 02/22/2023

60 PCAR Henrietta Pride 1104

DOB: 03/10/2021 Freeze Brand: 1104 Reg # 20274193
 Connealy Capitalist 028 S A V Final Answer 0035
LD Capitalist 316 Prides Pita of Conanga 8821
 LD Dixie Erica 2053 C A Future Direction 5321
 LD Dixie Erica Oar 0853

Sitz Bullseye 9994 Mogck Bullseye
 Sitz Pride 0128
PCAR Henrietta Pride 7112 Connealy Consensus 7229
 PCAR Henrietta Pride 3117 PCAR Henrietta Pride 5015

CED	BW	WW	YW	HP	Milk	Marb	RE	\$M	\$B	\$C
-1	3.9	70	112	6.5	24	.18	.87	63	138	242
BW		205 Wt			365 Wt					
66		570			832					

• Bull Bred. Due Date: 02/25/2023

61 PCAR Barb Nell 1122

DOB: 03/13/2021 Freeze Brand: 1122 Reg # 20263551
 R B Active Duty 010 LCC New Standard
OCC Active Duty 522 B A Lady 6807 305
 OCC Lucy 620 Kahn Broadband R A 94L
 Inniway Ms VRD 232

H A Image Maker 0415
 Pine Creek Image Maker 7131 PCAR Ruby 0240
PCAR Barb Nell 0005 Sitz Valubull 9835
 PCAR Barb Nell 8177 PCAR Barb Nell 0159

CED	BW	WW	YW	HP	Milk	Marb	RE	\$M	\$B	\$C
16	-2.2	58	102	11.4	30	.25	.36	52	118	205
BW		205 Wt			365 Wt					
58		611			821					

• Bull Bred. Due Date: 02/25/2023

57 PCAR Henrietta Pride 1360

DOB: 04/08/2021 Freeze Brand: 1360 Reg # 20263624
 Connealy Earnan 1383 Connealy Earnan 076E
M A Earnan 7046 Pattie of Conanga 1383
 M A Queen Kimberly 08M Connealy Reflection
 Alberda Queen Kimberly 200

R B Active Duty 010
 OCC Active Duty 522 OCC Lucy 620
PCAR Henrietta Pride 7212 Pine Creek Heritage 1215
 PCAR Henrietta Pride 3249 PCAR Henrietta Pride 7070

CED	BW	WW	YW	HP	Milk	Marb	RE	\$M	\$B	\$C
-1	4.6	65	106	14.6	27	.19	.79	66	126	229
BW		205 Wt			365 Wt					
90		656			912					

• Bull Bred. Due Date: 02/22/2023

59 PCAR Erica 1211

DOB: 03/17/2021 Freeze Brand: 1211 Reg # 20275292
 Sitz Stellar 726D Mohnen Substantial 272
Sitz Resilient 10208 SITZ Pride 200B
 Sitz Miss Burgess 1856 Sitz Top Game 561X
 Sitz Miss Burgess 4381

Sitz Bullseye 9994 Mogck Bullseye
 Sitz Pride 0128
PCAR Erica 8007 Sitz Final Product 765a
 PCAR Erica 6311 PCAR Erica 2064

CED	BW	WW	YW	HP	Milk	Marb	RE	\$M	\$B	\$C
11	-.7	71	123	15.3	32	.88	.82	90	153	288
BW		205 Wt			365 Wt					
72		525			875					

• Bull Bred. Due Date: 02/25/2023



Please register if you can't attend the sale.

- 1) Log in to CattleUSA.com
- 2) Push the Buyer Approval button next to the auction you wish to be approved at. Fill out your information then push the button at the bottom of the form to continue.
- 3) You have now sent your information to that auction. The auction will now be able to approve you to buy.

*Auctions do not have access to your information until you send it to them.

62

PCAR Ruby 1130

DOB: 03/13/2021 **Freeze Brand:** 1130 **Reg #** 20275241

Basin Payweight 1682 Basin Payweight 006S
 S221AR 7017
K C F Bennett Constitution K C F Bennett Homestead
 K C F Miss Homestead C452 K C F Miss Contrast Z607

Sitz Final Product 765a Connealy Final Product
 Sitz Pride 88T
PCAR Ruby 6041 Mr JT Power Design 4109
 PCAR Ruby 1372 PCAR Ruby 0240

CED	BW	WW	YW	HP	Milk	Marb	RE	\$M	\$B	\$C
13	-.6	66	119	10.6	33	-.05	.26	64	106	201
BW		205 Wt			365 Wt					
69		584			858					

• Bull Bred. Due Date: 02/25/2023



65 PCAR Henrietta Pride 1058

DOB: 02/24/2021 **Freeze Brand:** 1058 **Reg #** 20263646

Baldrige Bronc EF Commando 1366
 Baldridge Isabel Y69
Mr JT Bronc 818 WMR Timeless 458
 Miss JT Lady of Time 203 Miss JT Becky 506

M A Earnan 7046 Connealy Earnan 1383
 M A Queen Kimberly 08M
PCAR Henrietta Pride 9329 Pine Creek Heritage 1215
 PCAR Henrietta Pride 3249 PCAR Henrietta Pride 7070

CED	BW	WW	YW	HP	Milk	Marb	RE	\$M	\$B	\$C
8	1.6	55	106	9	16	.48	.53	49	130	218
BW		205 Wt			365 Wt					
61		471			791					

• Bull Bred. Due Date: 03/01/2023

67 PCAR Everelda Entense 1295

DOB: 03/23/2021 **Freeze Brand:** 1295 **Reg #** 20275284

KG Alliance 1193 Sitz Alliance 7544
 KG Rito Lady 9152
Pine Creek Alliance 7255 Hoover Dam
 PCAR Pride 3046 PCAR Pride 0085

Sitz Valubull 9835 Sitz Triangle S Valubull
 Sitz Miss Burgess 273
PCAR Everelda Entense 8105 Pine Creek Right Time 1147
 PCAR Everelda Entense 2243 P C A R Everelda Entense 579

CED	BW	WW	YW	HP	Milk	Marb	RE	\$M	\$B	\$C
7	1.8	73	143	12.3	33	.40	.74	53	155	254
BW		205 Wt			365 Wt					
85		629			1069					

• Bull Bred. Due Date: 03/01/2023

63

PCAR Ellie Elite 1413

DOB: 05/04/2021 **Freeze Brand:** 1413 **Reg #** 20263631

LD Capitalist 316 Connealy Capitalist 028
 LD Dixie Erica 2053
Pine Creek Capitalist 9113 WMR Timeless 458
 PCAR Erica 2064 PCAR Erica 8134

OCC Active Duty 522 RB Active Duty 010
 OCC Lucy 620
PCAR Ellie Elite 8186 Sitz Investment 660Z
 PCAR Ellie Elite 5253 PCAR Ellie Elite 1136

CED	BW	WW	YW	HP	Milk	Marb	RE	\$M	\$B	\$C
6	2.7	79	139	13.3	30	.25	.70	53	147	244
BW		205 Wt			365 Wt					
80		X			X					

• Bull Bred. Due Date: 02/25/2023

64

PCAR Erica 1013

DOB: 02/10/2021 **Freeze Brand:** 1013 **Reg #** 20263597

KG Alliance 1193 Sitz Alliance 7544
 KG Rito Lady 9152
Pine Creek Alliance 7255 Hoover Dam
 PCAR Pride 3046 PCAR Pride 0085

M A Earnan 7046 Connealy Earnan 1383
 M A Queen Kimberly 08M
PCAR Erica 9336 Sitz Right Answer 644Y
 PCAR Erica 3008 PCAR Erica 1240

CED	BW	WW	YW	HP	Milk	Marb	RE	\$M	\$B	\$C
8	.1	49	91	10.6	32	.82	.46	49	133	222
BW		205 Wt			365 Wt					
70		572			866					

• Bull Bred. Due Date: 03/01/2023

66

PCAR Lady 1228

DOB: 03/18/2021 **Freeze Brand:** 1228 **Reg #** 20275259

Poss Achievement Poss Lasting Impact 3118
 Poss Erica 327
Sitz Accomplishment 720F S A V Resource 1441
 Sitz Barabamere Nell 166D Sitz Barabamere Nell 14Y

Sitz Bullseye 9994 Mogck Bullseye
 Sitz Pride 0128
PCAR Lady 8160 Pine Creek Consensus 2004
 PCAR Lady 4010 PCAR Lady 2138

CED	BW	WW	YW	HP	Milk	Marb	RE	\$M	\$B	\$C
5	1.6	72	123	17.5	27	.27	.65	80	125	242
BW		205 Wt			365 Wt					
79		514			866					

• Bull Bred. Due Date: 03/01/2023



68 PCAR Lady of Vision 1124J

DOB: 03/13/2021 Freeze Brand: 1124J Reg # 20275342
 Sitz Stellar 726D Mohnen Substantial 272
Sitz Resilient 10208 SITZ Pride 200B
 Sitz Miss Burgess 1856 Sitz Top Game 561X
 Sitz Miss Burgess 4381

KG Alliance 1193 Sitz Alliance 7544
PCAR Lady of Vision 4030J KG Rito Lady 9152
 PCAR Lady of Vision 2029J Kesslers Frontman R001
 Miss JT Lady of Vision 473

CED	BW	WW	YW	HP	Milk	Marb	RE	\$M	\$B	\$C
8	.9	73	121	17	24	.45	.79	90	123	250
BW		205 Wt				365 Wt				
72		636				825				

• Bull Bred. Due Date: 03/01/2023

70 PCAR Pride 1386

DOB: 04/14/2021 Freeze Brand: 1386 Reg # 20263622
 Sitz Bullseye 9994 Mogck Bullseye
Pine Creek Bullseye 7260 Sitz Pride 0128
 PCAR Emma E 0032 Pine Creek IN Focus 7022
 PCAR Emma E 5122

Sitz Bullseye 9994 Mogck Bullseye
PCAR Pride 7189 Sitz Pride 0128
 PCAR Pride 4070 Sitz New Design 9685
 PCAR Pride 5172

CED	BW	WW	YW	HP	Milk	Marb	RE	\$M	\$B	\$C
6	2.4	78	136	12.9	29	.49	.47	70	134	244
BW		205 Wt				365 Wt				
88		645				936				

• Bull Bred. Due Date: 03/01/2023

72 PCAR Henrietta Pride 1051J

DOB: 02/20/2021 Freeze Brand: 1051J Reg # 20263594
 KG Alliance 1193 Sitz Alliance 7544
Pine Creek Alliance 7255 KG Rito Lady 9152
 PCAR Pride 3046 Hoover Dam
 PCAR Pride 0085

3F Epic 4631 Varilek Product 2010 04
PCAR Henrietta Pride 9166J Zebo Queen 1072
 PCAR Henrietta Pride 6287J Pine Creek Investment 4213J
 PCAR Henrietta Pride 1342J

CED	BW	WW	YW	HP	Milk	Marb	RE	\$M	\$B	\$C
2	1	80	139	12.4	27	1.21	.65	64	191	312
BW		205 Wt				365 Wt				
85		627				966				

• Bull Bred. Due Date: 03/11/2023

73 PCAR Starlet 1060J

DOB: 02/25/2021 Freeze Brand: 1060J Reg # 20263638
 Baldridge Bronc EF Commando 1366
Mr JT Bronc 818 Baldridge Isabel Y69
 Miss JT Lady of Time 203 WMR Timeless 458
 Miss JT Becky 506

KG Four Star 6107 KG Four Star 3036
PCAR Starlet 9121 KG Jessi Lynn 4450
 PCAR Starlet 7144 Pine Creek Investment 4213J
 PCAR Starlet 2243

CED	BW	WW	YW	HP	Milk	Marb	RE	\$M	\$B	\$C
15	-.3	54	97	8	28	.25	.66	52	102	184
BW		205 Wt				365 Wt				
62		501				773				

• Bull Bred. Due Date: 03/11/2023

69 PCAR Beebe Queen 1373

DOB: 04/10/2021 Freeze Brand: 1373 Reg # 20263611
 Sitz Bullseye 9994 Mogck Bullseye
Pine Creek Bullseye 7260 Sitz Pride 0128
 PCAR Emma E 0032 Pine Creek IN Focus 7022
 PCAR Emma E 5122

Sitz Consensus 12313 Connealy Consensus 7299
PCAR Beebe Queen 6008 Sitz Florabelle Fanny 4541
 PCAR Beebe Queen 4066 Pine Creek Thunder 1331
 PCAR Beebe Queen 8086

CED	BW	WW	YW	HP	Milk	Marb	RE	\$M	\$B	\$C
11	-.3	55	98	11.2	36	.48	.45	70	127	235
BW		205 Wt				365 Wt				
78		531				803				

• Bull Bred. Due Date: 03/01/2023

71 PCAR Barb Nell 1351

DOB: 04/05/2021 Freeze Brand: 1351 Reg # 20263605
 Sitz Bullseye 9994 Mogck Bullseye
Pine Creek Bullseye 7260 Sitz Pride 0128
 PCAR Emma E 0032 Pine Creek IN Focus 7022
 PCAR Emma E 5122

Ideal 9512 of 5570 7814 Ideal 5570 of 0452 0534
PCAR Barb Nell 3078 Ideal 7814 of 2P88 086
 PCAR Barb Nell 0005 Pine Creek Image Maker 7131
 PCAR Barb Nell 8177

CED	BW	WW	YW	HP	Milk	Marb	RE	\$M	\$B	\$C
4	1.6	69	117	11.4	35	.49	.14	54	116	204
BW		205 Wt				365 Wt				
78		563				859				

• Bull Bred. Due Date: 03/03/2023



74 PCAR Paige Mae 1081J

DOB: 03/06/2021 Freeze Brand: 1081J Reg # 20263641
 SydGen Enhance SydGen Exceed 3223
Mr JT Enhance 909 SydGen Rita 2618
 Miss JT Alli 740 KG Alliance 1193
 Miss JT Proud Lady 462

Pine Creek Alliance 7255 KG Alliance 1193
PCAR Paige Mae 9210J PCAR Pride 3046
 PCAR Paige Mae 6314J Pine Creek Investment 4213J
 PCAR Esther 2030J

CED	BW	WW	YW	HP	Milk	Marb	RE	\$M	\$B	\$C
6	-.6	71	123	16.5	35	1.36	.47	94	193	344
BW		205 Wt				365 Wt				
70		516				842				

• Bull Bred. Due Date: 03/11/2023

75**PCAR Missy 1234****DOB:** 03/19/2021 **Freeze Brand:** 1234 **Reg #** 20263598

Basin Payweight 1682

Basin Payweight 006S

K C F Bennett Constitution

S221AR 7017

K C F Miss Homestead C452

K C F Bennett Homestead

K C F Miss Contrast Z607

Pine Creek IN Focus 7022

Mytty In Focus

PCAR Missy 0070

PCAR Everelda Entense 5051

PCAR Missy 5010

Sitz Greatplains 8102

PCAR Missy 337

CED	BW	WW	YW	HP	Milk	Marb	RE	\$M	\$B	\$C
11	.1	71	125	8.5	26	.44	.39	52	138	231
BW		205 Wt				365 Wt				
75		607				863				

• Bull Bred. Due Date: 03/11/2023

**78****PCAR Emma E 1180****DOB:** 03/16/2021 **Freeze Brand:** 1180 **Reg #** 20263561

R B Active Duty 010

LCC New Standard

OCC Active Duty 522

B A Lady 6807 305

OCC Lucy 620

Kahn Broadband R A 94L

Inniway Ms VRD 232

Hoover Dam

SydGen C C & 7

PCAR Emma E 2149

Erica of Ellston C124

PCAR Emma E 9008

Sitz Valubull 9835

PCAR Emma E 7037

CED	BW	WW	YW	HP	Milk	Marb	RE	\$M	\$B	\$C
6	1.3	71	120	10.8	30	.24	.76	59	129	226
BW		205 Wt				365 Wt				
76		609				886				

• Bull Bred. Due Date: 03/11/2023

80**PCAR Pride 1171****DOB:** 03/15/2021 **Freeze Brand:** 1171 **Reg #** 20275360

Sitz Stellar 726D

Mohren Substantial 272

Sitz Resilient 10208

SITZ Pride 200B

Sitz Miss Burgess 1856

Sitz Top Game 561X

Sitz Miss Burgess 4381

Pine Creek Power Design 7277

Mr JT Power Design 4109

PCAR Pride 1378

PCAR Everelda Entense 316

PCAR Pride 5038

Pine Creek Dateline 3132

PCAR Pride 1184

CED	BW	WW	YW	HP	Milk	Marb	RE	\$M	\$B	\$C
8	1.6	72	128	15.4	26	.56	.56	65	141	248
BW		205 Wt				365 Wt				
80		642				941				

• Bull Bred. Due Date: 03/11/2023

76 PCAR Henrietta Pride 1270J**DOB:** 03/22/2021 **Freeze Brand:** 1270J **Reg #** 20275227

Poss Achievement

Poss Lasting Impact 3118

Sitz Accomplishment 720F

Poss Erica 327

Sitz Barbaramere Nell 166D

S A V Resource 1441

Sitz Barbaramere Nell 14Y

Sitz Bullseye 9994

Mogck Bullseye

PCAR Henrietta Pride 8311J

Sitz Pride 0128

PCAR Henrietta Pride 1342J

Mr JT Thunder 959

PCAR Henrietta Pride 7167J

CED	BW	WW	YW	HP	Milk	Marb	RE	\$M	\$B	\$C
4	.9	54	96	15.3	26	.46	0	80	119	234
BW		205 Wt				365 Wt				
77		512				786				

• Bull Bred. Due Date: 03/11/2023

77**PCAR Lady 1149****DOB:** 03/13/2021 **Freeze Brand:** 1149 **Reg #** 20263559

Mogck Bullseye

MOGCK Sure Shot

Sitz Bullseye 9994

Mogck Mary 1255

Sitz Pride 0128

Sitz Upward 307R

Sitz Pride 2561

Ideal 9512 of 5570 7814

Ideal 5570 of 0452 0534

Ideal 7814 of 2P88 086

PCAR Lady 2089

PCAR Lady 6033

Mr JT Power Design 4109

PCAR Lady 4050

CED	BW	WW	YW	HP	Milk	Marb	RE	\$M	\$B	\$C
0	1.6	77	130	11.5	27	-.16	.94	49	108	189
BW		205 Wt				365 Wt				
87		715				1011				

• Bull Bred. Due Date: 03/11/2023

79**PCAR Starlet 1184****DOB:** 03/16/2021 **Freeze Brand:** 1184 **Reg #** 20275255

Basin Payweight 1682

Basin Payweight 006S

K C F Bennett Constitution

S221AR 7017

K C F Miss Homestead C452

K C F Bennett Homestead

K C F Miss Contrast Z607

Pine Creek Thunder 1331

Mr JT Thunder 959

PCAR Starlet 3063

PCAR Starlet 0127

PCAR Missy 7080

Sitz Valubull 9835

PCAR Starlet 303

CED	BW	WW	YW	HP	Milk	Marb	RE	\$M	\$B	\$C
10	.2	68	109	11.3	31	.24	.46	72	120	228
BW		205 Wt				365 Wt				
72		562				813				

• Bull Bred. Due Date: 03/11/2023



81

PCAR Polly 1333

DOB: 03/31/2021 Freeze Brand: 1333 Reg # 20263618
Connealy Earnan 1383
M A Earnan 7046
Pine Creek Timeless 2109
PCAR Polly 7134
PCAR Polly 1304

Connealy Earnan 076E
Pattie of Conanga 1383
Connealy Reflection
Alberda Queen Kimberly 200
WMR Timeless 458
PCAR Doll 8215
Pine Creek IN Focus 7022
PCAR Polly 8260

Table with 11 columns: CED, BW, WW, YW, HP, Milk, Marb, RE, \$M, \$B, \$C. Row 1: 7, 1.3, 61, 104, 11.1, 25, -.03, .05, 71, 84, 180. Summary row: BW 71, 205 Wt 556, 365 Wt 828.

Bull Bred. Due Date: 03/13/2023

82

PCAR Lady Bell 1133J

DOB: 03/13/2021 Freeze Brand: 1133J Reg # 20275281
Mogck Bullseye
Sitz Bullseye 9994
KG High Regard 5087
PCAR Lady Bell 7034J
PCAR Lady Bell 5141J

MOGCK Sure Shot
Mogck Mary 1255
Sitz Upward 307R
Sitz Pride 2561
KG High Regard 2073
KG Princess 3259
Sitz Investment 660Z
PCAR Lady Bell 0354

Table with 11 columns: CED, BW, WW, YW, HP, Milk, Marb, RE, \$M, \$B, \$C. Row 1: 5, 1.9, 81, 129, 10.4, 22, .13, .72, 72, 121, 229. Summary row: BW 74, 205 Wt 602, 365 Wt 890.

Bull Bred. Due Date: 03/17/2023

84

PCAR Polly 1209

DOB: 03/17/2021 Freeze Brand: 1209 Reg # 20275251
Basin Payweight 1682
K C F Bennett Constitution
K C F Miss Homestead C452
Sitz Right Answer 644Y
PCAR Polly 3247
PCAR Polly 1304

Basin Payweight 006S
S221AR 7017
K C F Bennett Homestead
K C F Miss Contrast Z607
Connealy Right Answer 746
Sitz Barbaramere Jet 191W
Pine Creek IN Focus 7022
PCAR Polly 8260

Table with 11 columns: CED, BW, WW, YW, HP, Milk, Marb, RE, \$M, \$B, \$C. Row 1: 9, .3, 79, 130, 12.3, 30, .42, .47, 79, 128, 245. Summary row: BW 82, 205 Wt 611, 365 Wt 901.

Bull Bred. Due Date: 03/21/2023

86

PCAR Lady Bell 11505

DOB: 03/14/2021 Freeze Brand: 11505 Reg # 20275266
Poss Achievement
Sitz Accomplishment 720F
Sitz Barbaramere Nell 166D
KG High Regard 5087
PCAR Lady Bell 7234
PCAR Lady Bell 2039

Poss Lasting Impact 3118
Poss Erica 327
S A V Resource 1441
Sitz Barbaramere Nell 14Y
KG High Regard 2073
KG Princess 3259
Hoover Dam
PCAR Lady Bell 0203

Table with 11 columns: CED, BW, WW, YW, HP, Milk, Marb, RE, \$M, \$B, \$C. Row 1: 4, 1.2, 81, 144, 14.1, 11, .28, .66, 68, 145, 256. Summary row: BW 73, 205 Wt 576, 365 Wt 869.

Bull Bred. Due Date: 03/21/2023



83 PCAR Everelda Entense 1218

DOB: 03/18/2021 Freeze Brand: 1218 Reg # 20275299
Sitz Stellar 726D
Sitz Resilient 10208
Sitz Miss Burgess 1856
Sitz Bullseye 9994
PCAR Everelda Entense 8180
PCAR Everelda Entense 5251

Mohnen Substantial 272
SITZ Pride 200B
Sitz Top Game 561X
Sitz Miss Burgess 4381
Mogck Bullseye
Sitz Pride 0128
Sitz Right Answer 644Y
PCAR Everelda Entense 2024

Table with 11 columns: CED, BW, WW, YW, HP, Milk, Marb, RE, \$M, \$B, \$C. Row 1: 4, 2.6, 92, 160, 16.7, 32, .51, .77, 83, 153, 281. Summary row: BW 80, 205 Wt 642, 365 Wt 941.

Bull Bred. Due Date: 03/18/2023

85 PCAR Barb Nell 1288

DOB: 03/23/2021 Freeze Brand: 1288 Reg # 20263552
KG Alliance 1193
Pine Creek Alliance 7255
PCAR Pride 3046
Pine Creek Image Maker 7131
PCAR Barb Nell 0015
PCAR Barb Nell 8078

Sitz Alliance 7544
KG Rito Lady 9152
Hoover Dam
PCAR Pride 0085
H A Image Maker 0415
PCAR Ruby 0240
Mytty In Focus
PCAR Barb Nell 5027

Table with 11 columns: CED, BW, WW, YW, HP, Milk, Marb, RE, \$M, \$B, \$C. Row 1: 8, .2, 51, 100, 8.7, 23, .75, .29, 33, 143, 218. Summary row: BW 73, 205 Wt 588, 365 Wt 870.

Bull Bred. Due Date: 03/21/2023

87 PCAR Blackcap 1231

DOB: 03/19/2021 Freeze Brand: 1231 Reg # 20263607
R B Active Duty 010
OCC Active Duty 522
OCC Lucy 620
Hoover Dam
PCAR Blackcap 3159
PCAR Blackcap 6129

LCC New Standard
B A Lady 6807 305
Kahn Broadband R A 94L
Inniway Ms VRD 232
SydGen C C & 7
Erica of Ellston C124
Bon View Design 878
P C A R Blackcap 581

Table with 11 columns: CED, BW, WW, YW, HP, Milk, Marb, RE, \$M, \$B, \$C. Row 1: 15, -1.3, 50, 83, 11.6, 35, .25, .22, 70, 88, 184. Summary row: BW 77, 205 Wt 618, 365 Wt 853.

Bull Bred. Due Date: 03/23/2023

88

PCAR Starlet 1204

DOB: 03/17/2021 Freeze Brand: 1204 Reg # 20263562
LCC New Standard
B A Lady 6807 305
Kahn Broadband R A 94L
Inniway Ms VRD 232
Sitz Upward 307R
PCAR Pride 6051
Mr JT Ribeye 946
PCAR Starlet 5084
R B Active Duty 010
OCC Active Duty 522
OCC Lucy 620
Pine Creek Upward 0017
PCAR Starlet 3003
PCAR Starlet 1171

Table with columns: CED, BW, WW, YW, HP, Milk, Marb, RE, \$M, \$B, \$C. Row 1: 11, 1.5, 77, 133, 10.5, 31, .08, .64, 64, 117, 216. Summary rows for BW, 205 Wt, 365 Wt.

Bull Bred. Due Date: 03/23/2023

90 PCAR Henrietta Pride 1174

DOB: 03/16/2021 Freeze Brand: 1174 Reg # 20275298
Poss Lasting Impact 3118
Poss Erica 327
S A V Resource 1441
Sitz Barbaramere Nell 14Y
SydGen C C & 7
PCAR Barb Nell 5027
H A Image Maker 0415
P C A R Henrietta Pride 0395
Poss Achievement
Sitz Accomplishment 720F
Sitz Barbaramere Nell 166D
Pine Creek Heritage 1215
PCAR Henrietta Pride 3249
PCAR Henrietta Pride 7070

Table with columns: CED, BW, WW, YW, HP, Milk, Marb, RE, \$M, \$B, \$C. Row 1: 1, 3.6, 73, 128, 14.9, 27, .62, .68, 75, 141, 258. Summary rows for BW, 205 Wt, 365 Wt.

Bull Bred. Due Date: 03/31/2023

91 PCAR Barbaramere 1115

DOB: 03/12/2021 Freeze Brand: 1115 Reg # 20275297
Poss Lasting Impact 3118
Poss Erica 327
S A V Resource 1441
Sitz Barbaramere Nell 14Y
Connealy Right Answer 746
Sitz Barbaramere Jet 191W
Sitz Dash 10277
PCAR Barbaramere Nell 5039
Poss Achievement
Sitz Accomplishment 720F
Sitz Barbaramere Nell 166D
Sitz Right Answer 644Y
PCAR Barbaramere Nell 3287
PCAR Barbaramere Nell 1290

Table with columns: CED, BW, WW, YW, HP, Milk, Marb, RE, \$M, \$B, \$C. Row 1: 5, 3.2, 80, 141, 19, 26, .76, .80, 79, 155, 280. Summary rows for BW, 205 Wt, 365 Wt.

Bull Bred. Due Date: 04/05/2023

92 PCAR Missy 1338

DOB: 04/02/2021 Freeze Brand: 1338 Reg # 20263629
Varilek Product 2010 04
Zebo Queen 1072
Sitz Final Product 765a
PCAR Erica 0201
R B Active Duty 010
OCC Lucy 620
Mr JT Ribeye 946
PCAR Missy 9221
3F Epic 4631
Pine Creek Epic 9128
PCAR Erica 6082
OCC Active Duty 522
PCAR Missy 8090
PCAR Missy 2199

Table with columns: CED, BW, WW, YW, HP, Milk, Marb, RE, \$M, \$B, \$C. Row 1: 11, -1.6, 60, 110, 15.1, 30, .32, .24, 64, 95, 187. Summary rows for BW, 205 Wt, 365 Wt.

Bull Bred. Due Date: 04/06/2023

89

PCAR Starlet 1289

DOB: 03/23/2021 Freeze Brand: 1289 Reg # 20263591
Sitz Alliance 7544
KG Rito Lady 9152
Hoover Dam
PCAR Pride 0085
WMR Timeless 458
PCAR Doll 8215
Mytty In Focus
PCAR Starlet 6168
KG Alliance 1193
Pine Creek Alliance 7255
PCAR Pride 3046
Pine Creek Timeless 2109
PCAR Starlet 7121
PCAR Starlet 8020

Table with columns: CED, BW, WW, YW, HP, Milk, Marb, RE, \$M, \$B, \$C. Row 1: 1, 2.4, 68, 124, 14, 30, .61, .63, 53, 163, 264. Summary rows for BW, 205 Wt, 365 Wt.

Bull Bred. Due Date: 03/26/2023



93 PCAR Elsiemere 1005

DOB: 02/10/2021 Freeze Brand: 1005 Reg # 20263595
Leachman Right Time 338-5605
WMR Blackcap 521
Sitz New Design 9685
PCAR Doll 5179
S Chisum 255
PCAR Henrietta Pride 5040
Sitz Consensus 12313
PCAR Elsiemere 6024
WMR Timeless 458
Pine Creek Timeless 2109
PCAR Doll 8215
Pine Creek Chisum 7008
PCAR Elsiemere 9250
PCAR Elsiemere 6055

Table with columns: CED, BW, WW, YW, HP, Milk, Marb, RE, \$M, \$B, \$C. Row 1: 5, .9, 70, 107, 12.2, 17, .36, .61, 66, 128, 232. Summary rows for BW, 205 Wt, 365 Wt.

Bull Bred. Due Date: 04/07/2023

94

PCAR Starlet 1128

DOB: 03/13/2021 Freeze Brand: 1128 Reg # 20275245

Basin Payweight 1682 Basin Payweight 006S
S221AR 7017
K C F Bennett Constitution K C F Bennett Homestead
K C F Miss Homestead C452 K C F Miss Contrast Z607

Sitz Final Product 765a Connealy Final Product
Sitz Pride 88T
PCAR Starlet 5024 Ideal 9512 of 5570 7814
PCAR Starlet 3104 PCAR Starlet 0162

Table with columns: CED, BW, WW, YW, HP, Milk, Marb, RE, \$M, \$B, \$C. Row 1: 17, -3.5, 62, 103, 18.7, 35, .28, .39, 105, 116, 255. Summary row: BW 64, 205 Wt 614, 365 Wt 860.

Bull Bred. Due Date: 04/10/2023

96

PCAR Barbarmere 1073

DOB: 03/01/2021 Freeze Brand: 1073 Reg # 20263635

Baldrige Bronc EF Commando 1366
Baldrige Isabel Y69
Mr JT Bronc 818 WMR Timeless 458
Miss JT Lady of Time 203 Miss JT Becky 506

R B Active Duty 010
OCC Active Duty 522 OCC Lucy 620
PCAR Barbarmere 9054 Pine Creek Upward 0017
PCAR Barbaramere 2008 PCAR Barbaramere 0206

Table with columns: CED, BW, WW, YW, HP, Milk, Marb, RE, \$M, \$B, \$C. Row 1: 9, .5, 67, 121, 12.1, 33, .15, .92, 53, 136, 229. Summary row: BW 78, 205 Wt 610, 365 Wt 933.

Bull Bred. Due Date: 04/10/2023

98

PCAR Missy 1061

DOB: 02/26/2021 Freeze Brand: 1061 Reg # 20263639

Baldrige Bronc EF Commando 1366
Baldrige Isabel Y69
Mr JT Bronc 818 WMR Timeless 458
Miss JT Lady of Time 203 Miss JT Becky 506

Connealy Capitalist 028
LD Capitalist 316 LD Dixie Erica 2053
PCAR Missy 9136 Connealy Consensus 7229
PCAR Missy 3183 PCAR Missy 5005

Table with columns: CED, BW, WW, YW, HP, Milk, Marb, RE, \$M, \$B, \$C. Row 1: 7, .4, 55, 97, 11.4, 20, .52, .32, 68, 113, 215. Summary row: BW 72, 205 Wt 550, 365 Wt 852.

Bull Bred. Due Date: 04/12/2023

100

PCAR Missy 1140

DOB: 03/13/2021 Freeze Brand: 1140 Reg # 20274195

Connealy Capitalist 028 S A V Final Answer 0035
Prides Pita of Conanga 8821
LD Capitalist 316 C A Future Direction 5321
LD Dixie Erica 2053 LD Dixie Erica Oar 0853

Connealy Final Product
Sitz Final Product 765a Sitz Pride 88T
PCAR Missy 6284 Hoover Dam
PCAR Missy 2112 PCAR Missy 5010

Table with columns: CED, BW, WW, YW, HP, Milk, Marb, RE, \$M, \$B, \$C. Row 1: 8, 1.5, 62, 106, 6, 25, .37, .79, 52, 137, 230. Summary row: BW 76, 205 Wt 624, 365 Wt 846.

Bull Bred. Due Date: 04/12/2023

95

PCAR Blackcap 1393

DOB: 04/18/2021 Freeze Brand: 1393 Reg # 20263614

Sitz Bullseye 9994 Mogck Bullseye
Sitz Pride 0128
Pine Creek Bullseye 7260 Pine Creek IN Focus 7022
PCAR Emma E 0032 PCAR Emma E 5122

Sitz Investment 660Z
Pine Creek Investment 4213J PCAR Lady Bell 0354
PCAR Blackcap 6150 Ideal 9512 of 5570 7814
PCAR Blackcap 1214 PCAR Blackcap 6206

Table with columns: CED, BW, WW, YW, HP, Milk, Marb, RE, \$M, \$B, \$C. Row 1: 4, 1.5, 58, 104, 11.9, 31, .50, .29, 72, 121, 229. Summary row: BW 90, 205 Wt 581, 365 Wt 802.

97

PCAR Starlet 1118

DOB: 03/13/2021 Freeze Brand: 1118 Reg # 20275321

Mohnen Substantial 272
Sitz Stellar 726D SITZ Pride 200B
Sitz Resilient 10208 Sitz Top Game 561X
Sitz Miss Burgess 1856 Sitz Miss Burgess 4381

Connealy Final Product
Sitz Final Product 765a Sitz Pride 88T
PCAR Starlet 6182 Ideal 9512 of 5570 7814
PCAR Starlet 3104 PCAR Starlet 0162

Table with columns: CED, BW, WW, YW, HP, Milk, Marb, RE, \$M, \$B, \$C. Row 1: 0, 3.6, 71, 123, 20.1, 34, .96, .72, 82, 157, 286. Summary row: BW 81, 205 Wt 594, 365 Wt 882.

Bull Bred. Due Date: 04/11/2023

99

PCAR Starlet 1266J

DOB: 03/21/2021 Freeze Brand: 1266J Reg # 20275232

Basin Payweight 1682 Basin Payweight 006S
S221AR 7017
K C F Bennett Constitution K C F Bennett Homestead
K C F Miss Homestead C452 K C F Miss Contrast Z607

KG High Regard 2073
KG High Regard 5087 KG Princess 3259
PCAR Starlet 8215J Pine Creek Investment 4213J
PCAR Starlet 6017J PCAR Starlet 4239J

Table with columns: CED, BW, WW, YW, HP, Milk, Marb, RE, \$M, \$B, \$C. Row 1: 8, 1.4, 78, 146, 12.9, 29, .51, .46, 58, 161, 267. Summary row: BW 73, 205 Wt 577, 365 Wt 929.

Bull Bred. Due Date: 04/12/2023

101

PCAR Emma E 1062J

DOB: 02/27/2021 Freeze Brand: 1062J Reg # 20263644

Baldrige Bronc EF Commando 1366
Baldrige Isabel Y69
Mr JT Bronc 818 WMR Timeless 458
Miss JT Lady of Time 203 Miss JT Becky 506

KG Four Star 3036
KG Four Star 6107 KG Jessi Lynn 4450
PCAR Emma E 9222J Pine Creek Investment 4213J
PCAR Emma E 7106 PCAR Emma E 7037

Table with columns: CED, BW, WW, YW, HP, Milk, Marb, RE, \$M, \$B, \$C. Row 1: 11, .6, 52, 103, 14.7, 32, .67, .56, 53, 132, 224. Summary row: BW 77, 205 Wt 518, 365 Wt 840.

Bull Bred. Due Date: 04/13/2023

33RD ANNUAL SPRING BULL SALE APRIL 21, 2023

102

PCAR Missy 1376

DOB: 04/11/2021 **Freeze Brand:** 1376 **Reg #** 20263621

Connealy Earnan 1383 Connealy Earnan 076E
 Pattie of Conanga 1383
M A Earnan 7046 Connealy Reflection
 M A Queen Kimberly 08M Alberda Queen Kimberly 200

Mogck Bullseye
 Sitz Bullseye 9994 Sitz Pride 0128
PCAR Missy 7183 Connealy Consensus 7229
 PCAR Missy 3183 PCAR Missy 5005

CED	BW	WW	YW	HP	Milk	Marb	RE	\$M	\$B	\$C
6	2.5	69	128	11.3	28	.38	.55	54	125	216
BW		205 Wt				365 Wt				
78		582				889				

• Bull Bred. Due Date: 04/13/2023

103

PCAR Polly 1237J

DOB: 03/19/2021 **Freeze Brand:** 1237J **Reg #** 20275288

Sitz Stellar 726D Mohnen Substantial 272
 SITZ Pride 200B
Sitz Resilient 10208 Sitz Top Game 561X
 Sitz Miss Burgess 1856 Sitz Miss Burgess 4381

WMR Timeless 458
 Pine Creek Timeless 2109 PCAR Doll 8215
PCAR Polly 8138 Pine Creek Dateline 5133
 PCAR Polly 8260 PCAR Polly 1284

CED	BW	WW	YW	HP	Milk	Marb	RE	\$M	\$B	\$C
6	1.1	69	120	18.8	30	.58	.35	84	131	254
BW		205 Wt				365 Wt				
76		608				918				

• Bull Bred. Due Date: 04/15/2023

104

PCAR Pride 1267

DOB: 03/21/2021 **Freeze Brand:** 1267 **Reg #** 20275306

Sitz Stellar 726D Mohnen Substantial 272
 SITZ Pride 200B
Sitz Resilient 10208 Sitz Top Game 561X
 Sitz Miss Burgess 1856 Sitz Miss Burgess 4381

Sitz Alliance 7544
 KG Alliance 1193 KG Rito Lady 9152
PCAR Pride 8198 Hoover Dam
 PCAR Pride 3046 PCAR Pride 0085

CED	BW	WW	YW	HP	Milk	Marb	RE	\$M	\$B	\$C
8	.3	74	135	19.5	31	.44	.5	95	147	286
BW		205 Wt				365 Wt				
75		577				931				

• Bull Bred. Due Date: 04/17/2023

105

PCAR Lady 1364J

DOB: 04/09/2021 **Freeze Brand:** 1364J **Reg #** 20263617

Connealy Earnan 1383 Connealy Earnan 076E
 Pattie of Conanga 1383
M A Earnan 7046 Connealy Reflection
 M A Queen Kimberly 08M Alberda Queen Kimberly 200

KG High Regard 2073
 KG High Regard 5087 KG Princess 3259
PCAR Lady 7067 Sitz Investment 660Z
 PCAR Lady 5160 PCAR Lady 1139

CED	BW	WW	YW	HP	Milk	Marb	RE	\$M	\$B	\$C
-4	3	73	121	10.2	20	-.18	.48	61	111	205
BW		205 Wt				365 Wt				
85		655				921				

• Bull Bred. Due Date: 04/28/2023

106

PCAR Starlet 1093J

DOB: 03/09/2021 **Freeze Brand:** 1093J **Reg #** 20263558

Mogck Bullseye MOGCK Sure Shot
 Mogck Mary 1255
Sitz Bullseye 9994 Sitz Upward 307R
 Sitz Pride 0128 Sitz Pride 2561

Sitz Upward 307R
 Pine Creek Upward 0017 PCAR Pride 6051
PCAR Starlet 2057J Pine Creek Right Time 0442
 PCAR Starlet 45J J D W Starlet 8 J

CED	BW	WW	YW	HP	Milk	Marb	RE	\$M	\$B	\$C
9	-.1	61	100	11.9	40	.01	.63	83	103	217
BW		205 Wt				365 Wt				
69		522				844				

• Bull Bred. Due Date: 04/30/2023



Granddaughters are a treasure!



Many hands make light work.





Lyle & Miriam Weiss
17013 Maurine Road
Faith, SD 57626

PRESORTED
FIRST-CLASS
US POSTAGE
PAID
RAPID CITY, SD
PERMIT NO. 618

Counting our blessings...
As they pour down like Rain!



Selling: 38 Registered Coming Two Year Old Bulls
67 Registered Bred Heifers

Friday, December 16th, 2022 • 1:00 PM MT Faith Livestock Auction • Faith, SD